

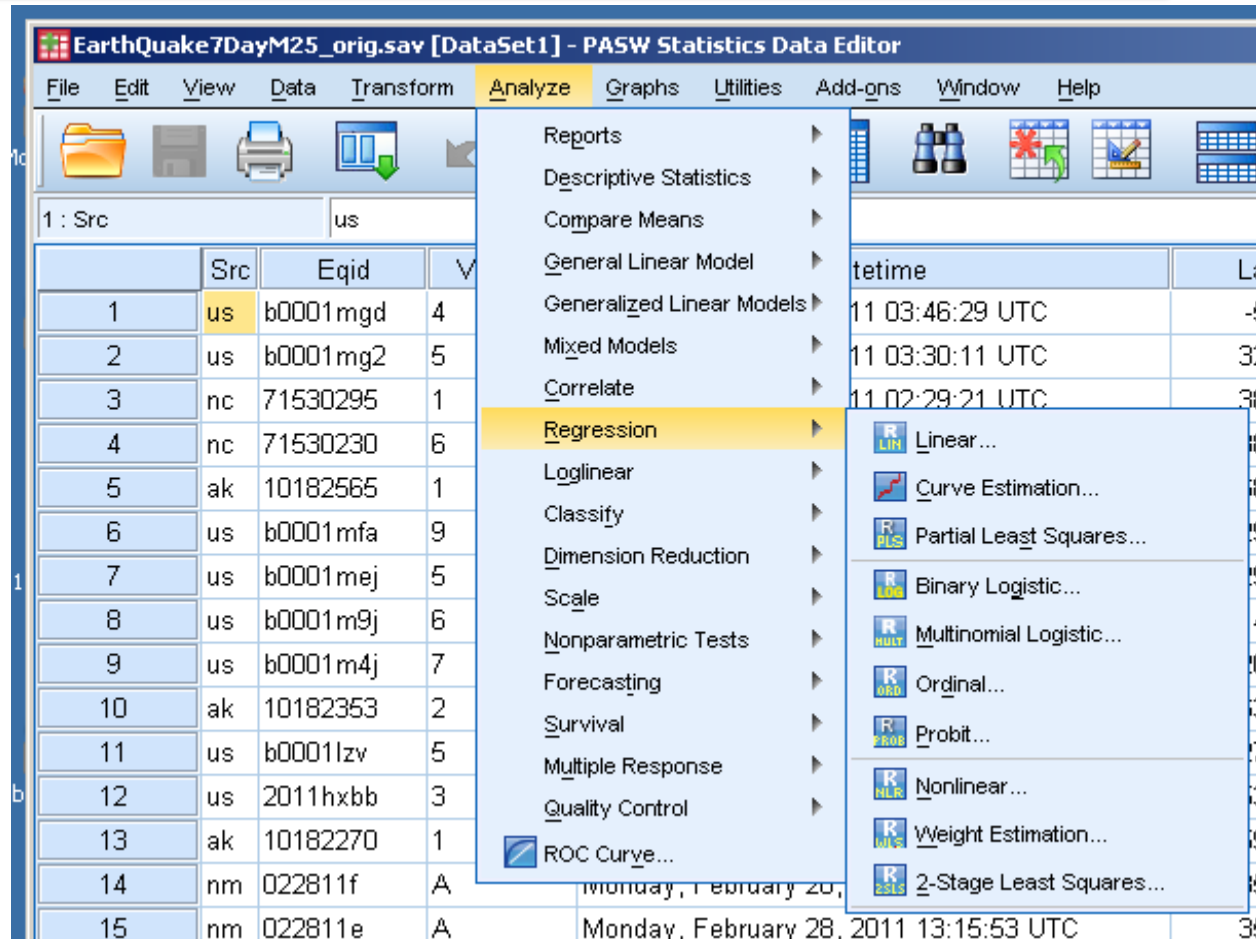
# SPSS Regression

Fall 2014

# Regression

## EarthQuakeSmall.sav in CS 130 Public

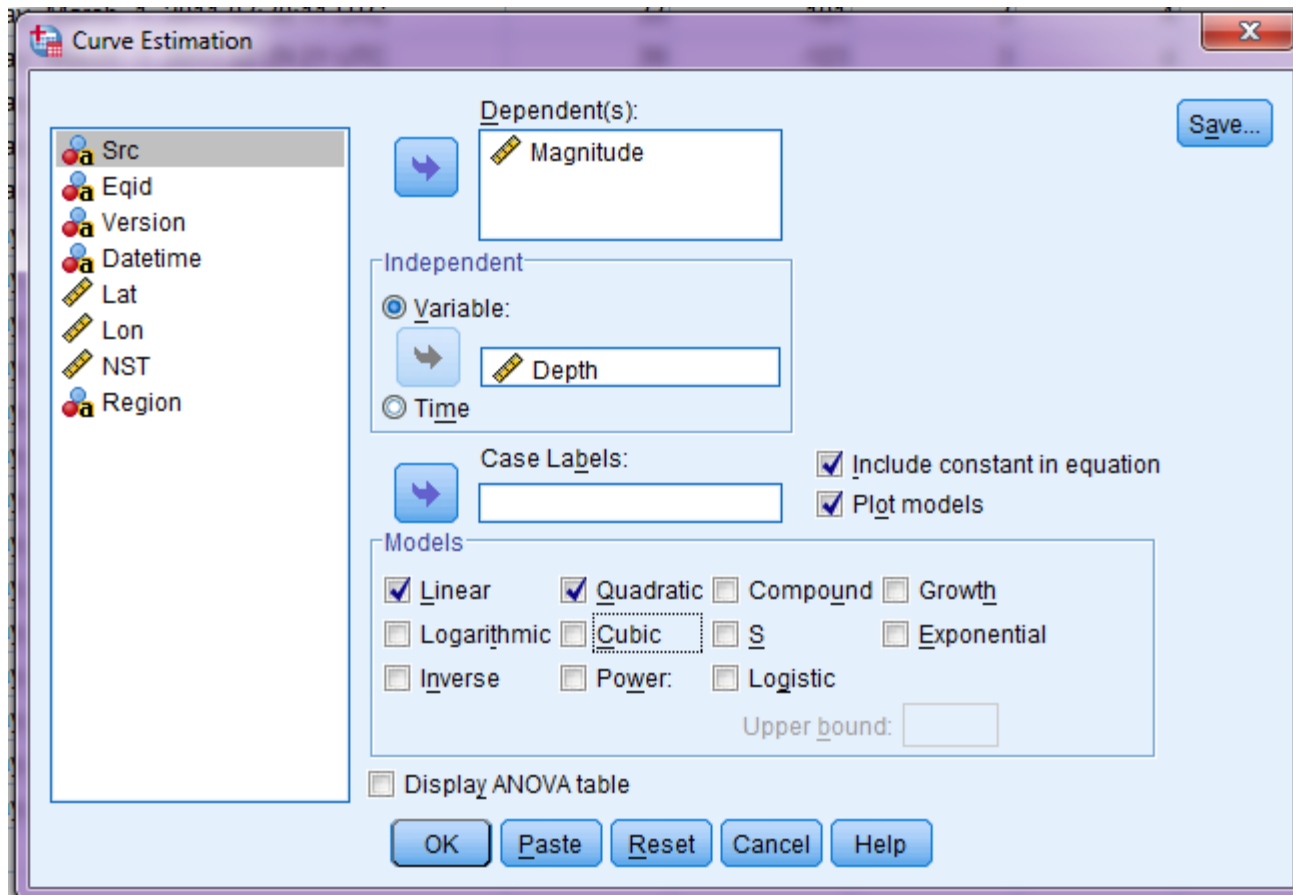
- Analyze |
- Regression |
- Curve Estimation



The screenshot shows the PASW Statistics Data Editor interface. The title bar reads "EarthQuake7DayM25\_orig.sav [DataSet 1] - PASW Statistics Data Editor". The menu bar includes File, Edit, View, Data, Transform, Analyze, Graphs, Utilities, Add-ons, Window, and Help. The Analyze menu is open, showing options like Reports, Descriptive Statistics, Compare Means, General Linear Model, Generalized Linear Models, Mixed Models, Correlate, Regression (highlighted), Loglinear, Classify, Dimension Reduction, Scale, Nonparametric Tests, Forecasting, Survival, Multiple Response, and Quality Control. The Regression submenu is also open, showing options like Linear..., Curve Estimation..., Partial Least Squares..., Binary Logistic..., Multinomial Logistic..., Ordinal..., Probit..., Nonlinear..., Weight Estimation..., and 2-Stage Least Squares... The data grid below the menu shows columns for Src, Eqid, and other variables. The data rows are numbered 1 through 15.

	Src	Eqid	V
1	us	b0001mgd	4
2	us	b0001mg2	5
3	nc	71530295	1
4	nc	71530230	6
5	ak	10182565	1
6	us	b0001mfa	9
7	us	b0001mej	5
8	us	b0001m9j	6
9	us	b0001m4j	7
10	ak	10182353	2
11	us	b0001lvz	5
12	us	2011hxbb	3
13	ak	10182270	1
14	nm	022811f	A
15	nm	022811e	A

# Regressions continued



### Model Summary and Parameter Estimates

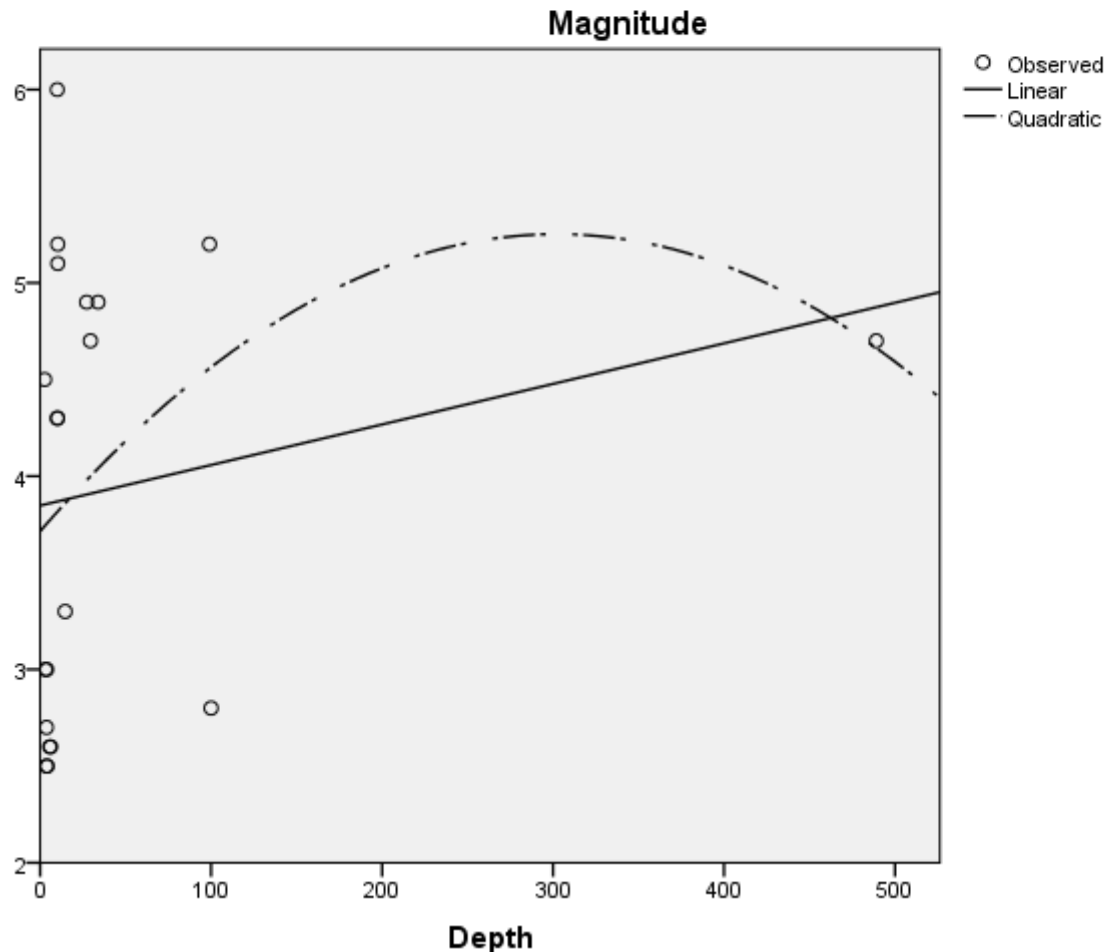
Dependent Variable: Magnitude

Equation	Model Summary					Parameter Estimates		
	R Square	F	df1	df2	Sig.	Constant	b1	b2
Linear	.039	.737	1	18	.402	3.848	.002	
Quadratic	.066	.603	2	17	.558	3.715	.010	-1.685E-005

The independent variable is Depth.

Equations?

R<sup>2</sup>?



**y =**  
**x =**

**Linear:**  
 $y = mx + b$

m =  
b =

**Quadratic:**  
 $y = ax^2 + bx + c$

a =  
b =  
c =