

# Project

- If you need webspace on zeus see me after class!
  - I may not be in the office Wednesday
  - make an appointment for Wednesday morning if you need to talk
- Don't forget about the Messageboards
  - post MySQL/PHP questions/solutions
- 10 minute presentation / 5 minutes of questions
  - practiced
  - professional
  - show a demo of your product
- Questions?

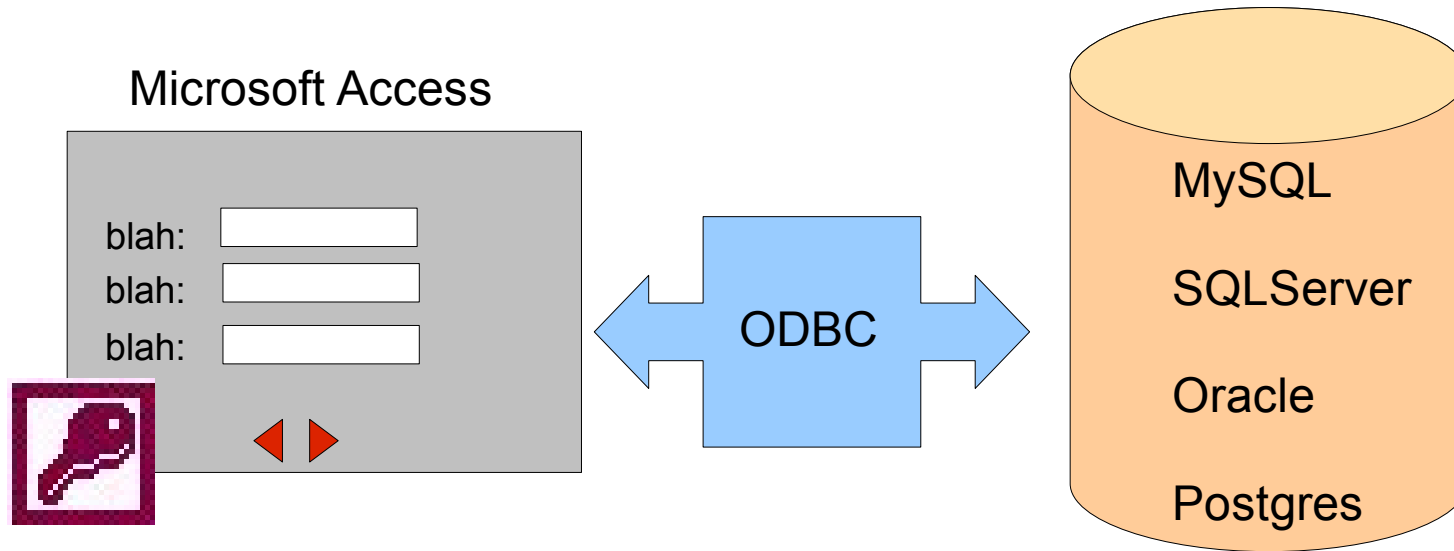
# Microsoft Access MySQL ODBC

Nov 20, 2007

# Microsoft Access

- Small, Desktop database
  - good for small number of users
  - smaller amounts of data / few users
  - small office, Windows-based computers
- Graphical interface
  - table/query design
  - Forms
    - GUI to enter/query/display data
- Can link to other databases
  - provided GUI to MySQL DB
  - ODBC
  - Excel spreadsheets

# Access + ODBC + MySQL



## Open DataBase Connectivity

Standard API to connect to a [remote] DB  
Provided by database producer

## JDBC: Java Database Connectivity

# Today

- Attach Microsoft Access to a MySQL DB
- Work with the query editor
- Build a small form
- Build a Report
- Build a relationship

You will often get a **(Not Responding)** message from Access when you link to remote tables. Be patient. It almost always begins responding quickly.

# To Start

Access does not handle binary data in MySQL well

```
mysql> use PUNetID_accessExample;
```

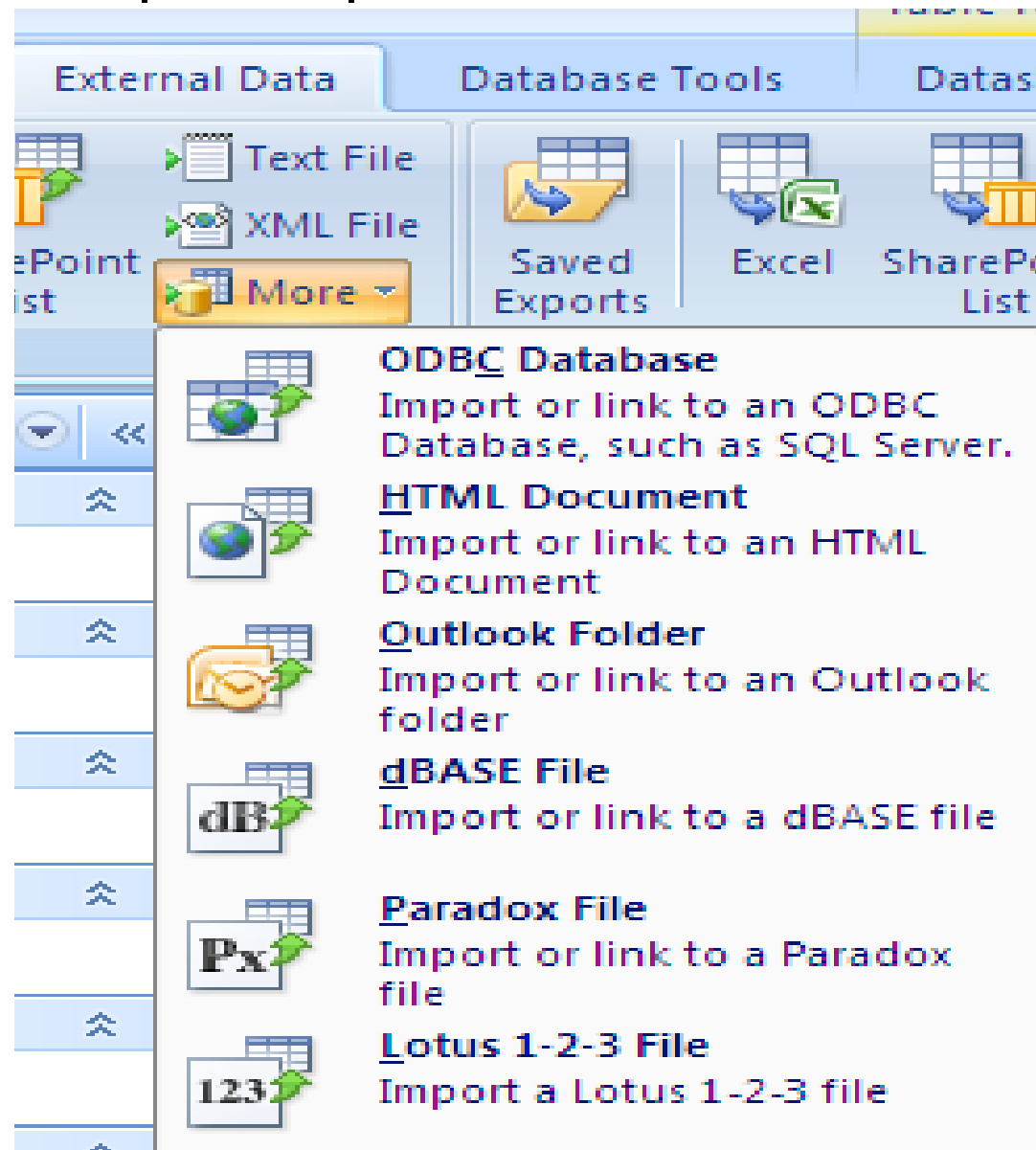
```
mysql> source /home/chadd/cs445Data/accessExample.sql
```

```
mysql> show tables;
```

```
mysql> show create table StudentMajor;
```

# Link the tables

- External Data | More | ODBC



# Connector/ODBC



Login | **Connect Options** | Advanced

Server

User

Password

Database  

## User

The username used to connect to MySQL.

**Optional** Yes (silently uses default)

**Default** ODBC (Windows only - otherwise [empty])

You must type this in! The drop down box does not work!

Ok Cancel Help