



Intro to SPSS

Spring 2013

Intro to SPSS

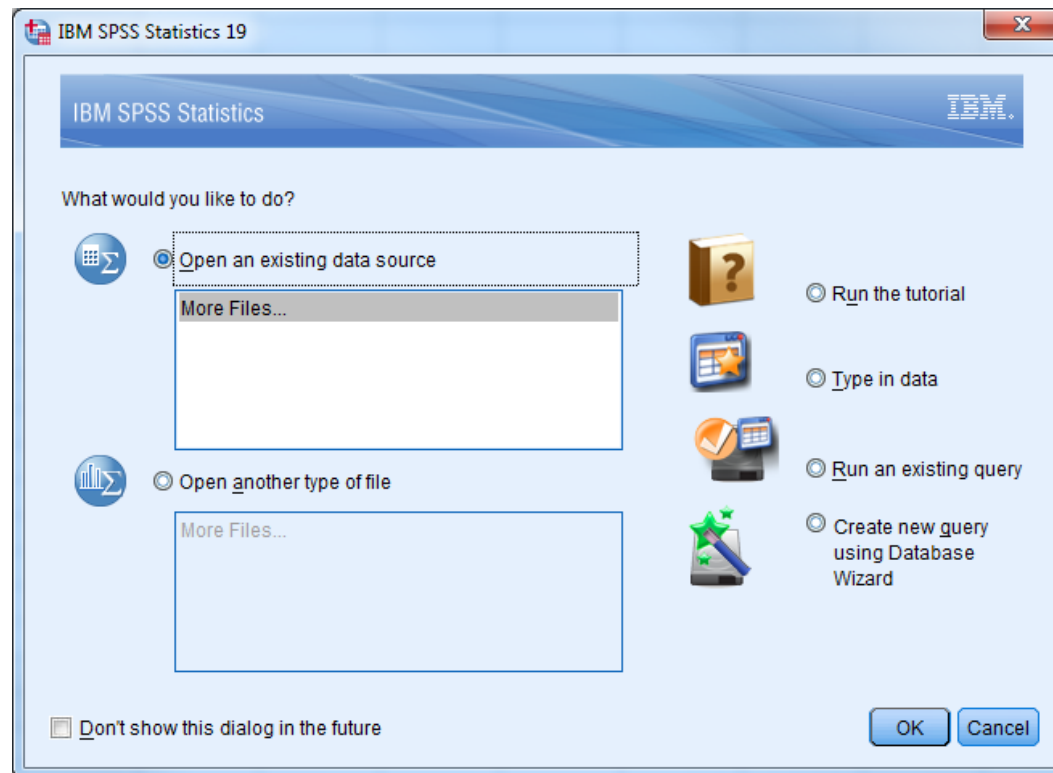
- SPSS is a statistical analysis program that allows:
 - Data management
 - Graphs and tables
 - Statistical analyses
 - You will need: some basic statistics
 - We will discuss these
- SPSS is more *specialized* than Excel
- Provide data in a more precise way

SPSS

-
- Goals for this section of the course include:
 - Becoming familiar with Statistical Packages
 - Creating new Datasets
 - Importing & exporting Datasets
 - Manipulating data in a Dataset
 - Basic analysis of data (mainly descriptive statistics)
 - An overview of SPSS's advanced features
 - Examining the Help utility within SPSS

Note: This is not a statistics course such as Math 207. We will only concentrate on basic statistical concepts.

Open SPSS



Run the Tutorial

The screenshot shows a web browser window titled "Help - IBM SPSS Statistics". The address bar contains the URL "127.0.0.1:60004/help/index.jsp?topic=/com.ibm.spss.statistics.tut/introtut2.htm". The search bar is empty, and the search scope is set to "All topics".

The left sidebar contains a "Contents" menu with the following items:

- Help
- Tutorial**
 - Introduction**
 - Reading Data
 - Using the Data Editor
 - Working with Multiple Data Sources
 - Examining Summary Statistics for Individual Variables
 - Crosstabulation Tables
 - Creating and editing charts
 - Working with Output
 - Working with Syntax
 - Modifying Data Values
 - Time Saving Features
 - Customizing IBM SPSS Statistics
 - Automated Production
 - Scoring data with predictive models
 - Getting Started with Custom Tables
- Case Studies
- Statistics Coach
- Add-ons

The main content area displays the "Introduction" page. It features a blue header with "Introduction >" and "Introduction". The text reads:

This tutorial will show you how to use many of the available features. It is designed to provide a step-by-step, hands-on guide. All of the files shown in the examples are installed with the tutorial so that you can follow along, performing the same analyses and obtaining the same results shown here.

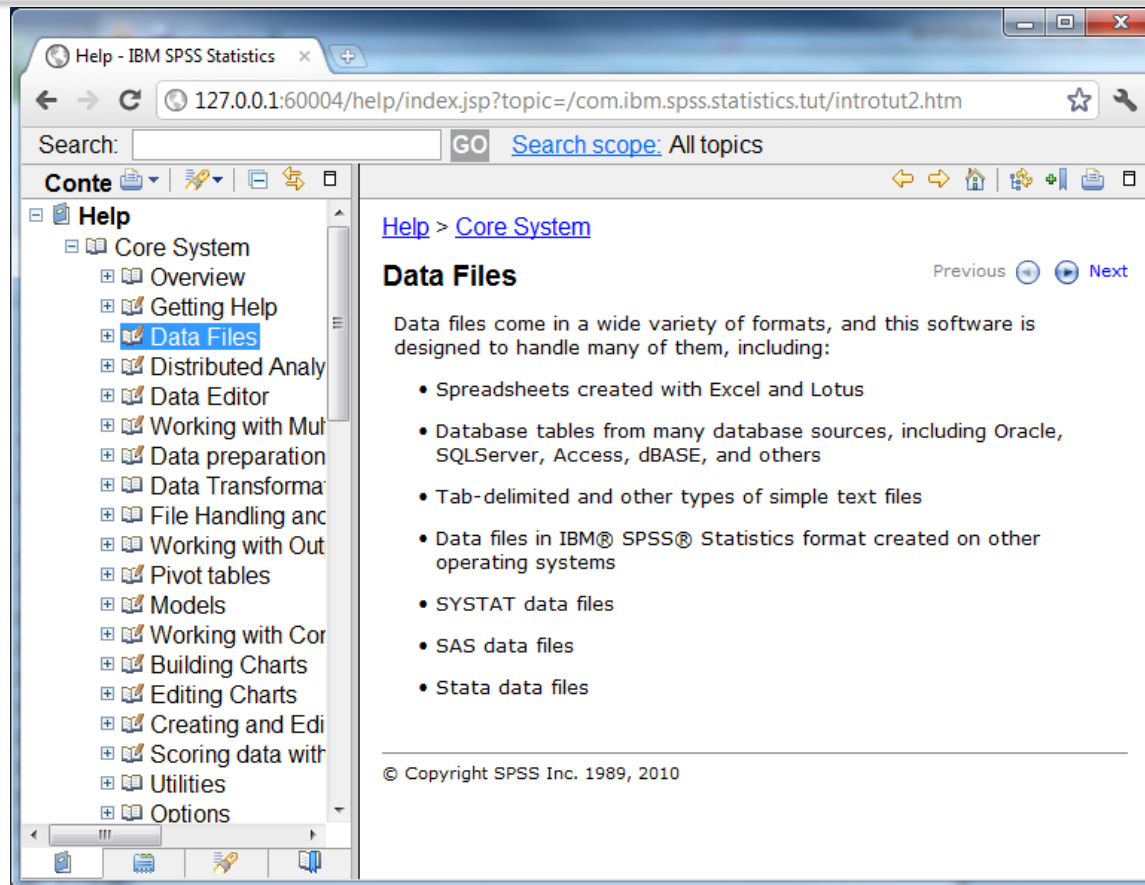
It is also designed to make it easy for you to start and stop anywhere you want. If you want to learn about only a few specific tasks, use the Contents and Index buttons (next to the Back and Next buttons) at the bottom of this window to find the information you need, or simply click the Next button (arrow pointing right) to step through all of the tutorials from beginning to end.

If you want detailed examples of various statistical analysis techniques, try the step-by-step [Case Studies](#).

© Copyright SPSS Inc. 1989, 2010

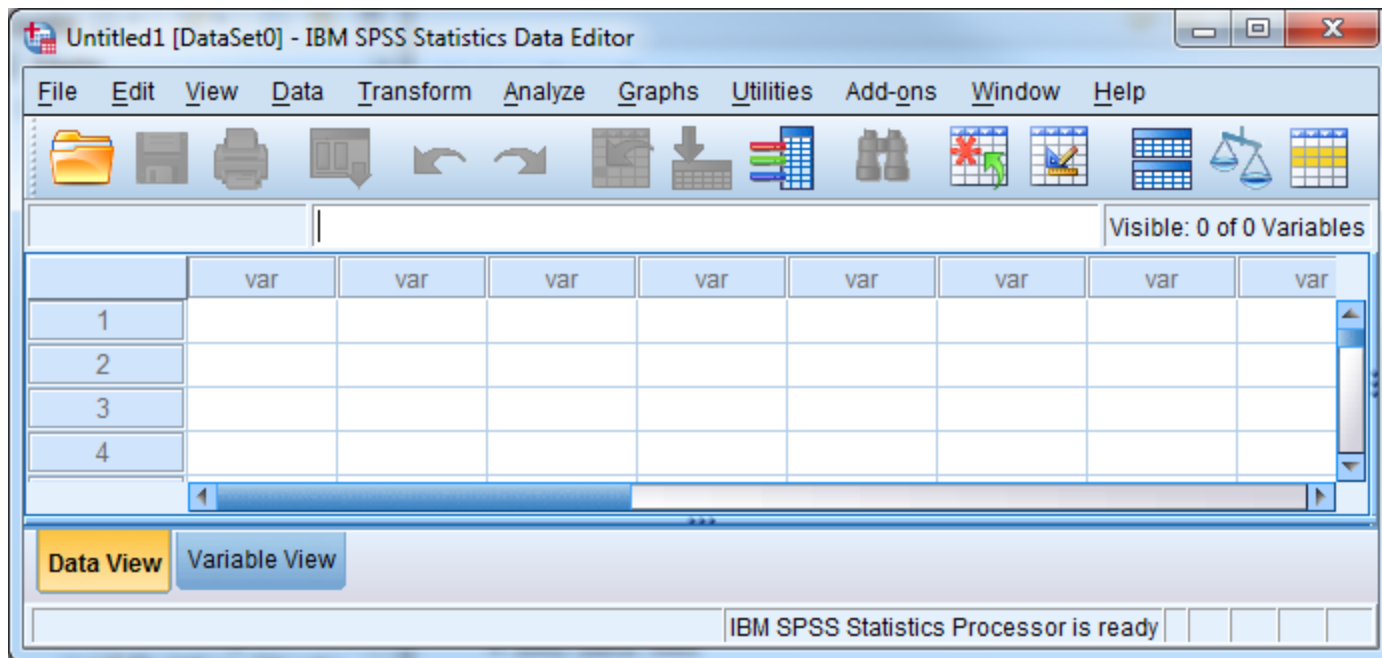
At the bottom of the page, the word "Introduction" is displayed in a large, light blue font, and a play button icon is visible in the bottom right corner.

SPSS Help



Create a Simple Dataset

- SPSS looks somewhat like Excel BUT there are several important differences
- Select the Data View tab



Excel versus SPSS Differences

- Column data pertains to a particular **variable**

List several examples of what a variable might be

- Row data is considered a case or an observation

List several examples of an observations

- A cell contains a value for a particular variable that is part of a part of a particular observation

SPSS Views

- Data View – displays the actual values of the data set
- Variable View – contains the descriptions of each variable's attribute in the data file

List at least three attributes of a variable from the Variable View

Dog Dataset Example

Breed	Age	Weight
Collie	2	23
Collie	3	35
Setter	5	45
Shepard	1	65
Setter	2	72

Dataset Questions

- Using the SPSS Tutorial, SPSS Help, or Web define each of the following terms and give a real life example of each. SPSS contains the following data types (**measures**):
 - Categorical
 - Nominal
 - Ordinal
 - Scale

Dataset Questions

- Using the SPSS, SPSS Tutorial, and SPSS Help:
 - What are the **types** available in the Variable View?

- We can build the Dog data sheet together
 - Variable View

– Enter Data

Data	Type	Measure
Breed		
Age		
Weight		

Candy Dataset Example

Brand	Name	ServingPerPkg	OzPerPkg	Calories	TotalFatInGrams	SatFatInGrams
M&M/Mars	Snickers Peanut Butter	1.0	2.00	310	20	7.0
Hershey	Cookies 'n Mint	1.0	1.55	230	12.0	6.0
Hershey	Cadbury Dairy Milk	3.5	5.00	220	12.0	8.0
M&M/Mars	Snickers	3.0	3.70	170	8.0	3.0
Charms	Sugar Daddy	1.0	1.70	200	2.5	2.5

More Dataset Questions

- For the given dataset, what is the type and measure for the data for each of the variables?
Why?
 - Brand
 - Name
 - ServingPerPkg
 - OzPerPkg
 - Calories
 - TotalFatInGrams
 - SatFatInGrams

Problem 8.1

Setup the Variable information

Input the data by hand

Create the dataset Candy8.1 from the Candy dataset using SPSS 19.0

1. Create the variables using the Variable View. Make sure that each variable has the correct **Type** and **Measure**.
2. Set the decimals column as follows: Brand: 0, Name: 0, ServingPerPkg: 1, OzPerPkg: 2, Calories: 0, TotalFatInGrams: 1, and SatFatInGrams: 1.
3. In the Values column, create the Value Labels for Brand where 1 = "M&M/Mars", 2 = "Hershey", and 3 = "Charms".
4. Change to Data View and enter the candy data. You will need to go back to Variable View and edit some of the settings. Do so as necessary.

Types of Data Analysis

- When doing data analysis, we are interested in two types of summaries:
 - Statistical Summaries (e.g. descriptive, hypothesis testing)
 - Visual Summaries (e.g. tables, graphs)

Areas of Statistics

- **Descriptive Statistics**
 - describe and summarize data
- **Inferential Statistics**
 - Infer from samples
 - e.g. smokers smoking a pack of cigarettes per day have higher cholesterol
 - Hypothesis testing

Descriptive Statistics

- We are concerned, among other things, the following:
 - Mean
 - Median
 - Mode

Problem 8.1 Continued

- Identify each of the following for Total Fat giving your answer to 1 decimal place:
 - Minimum:
 - Maximum:
 - Mean:
 - Standard Deviation:

Problem 8.2

A paint manufacturer tested two experimental brands of paint over a period of months to determine how long they would last without fading. Here are the results:

Brand A	Brand B	Report on the following
10	25	-Mean
20	35	-Median
60	40	-Mode
40	45	-Std Deviation
50	35	-Minimum
30	30	-Maximum

Solution - Method 1

One way has two variable columns where the first is BrandA and the second is BrandB. Enter the above data and find the asked for information. Save this file as BrandMethod1.sav.

What are the type and measure values for:

BrandA _____ and
BrandB _____

Solution – Method 2

The second way has two columns where the first column is a variable called Brand and the second column is called Fading. Create value labels where 1="BrandA" and 2="BrandB". Enter the information and find the asked for information. Save this file as BrandMethod2.sav.

What are the type and measure values for
Brand _____ and
Fading _____

What do the descriptive statistics tell us about the paint with regard to fading?