



SPSS Regression

Spring 2012

Regression

EarthQuakeSmall.sav

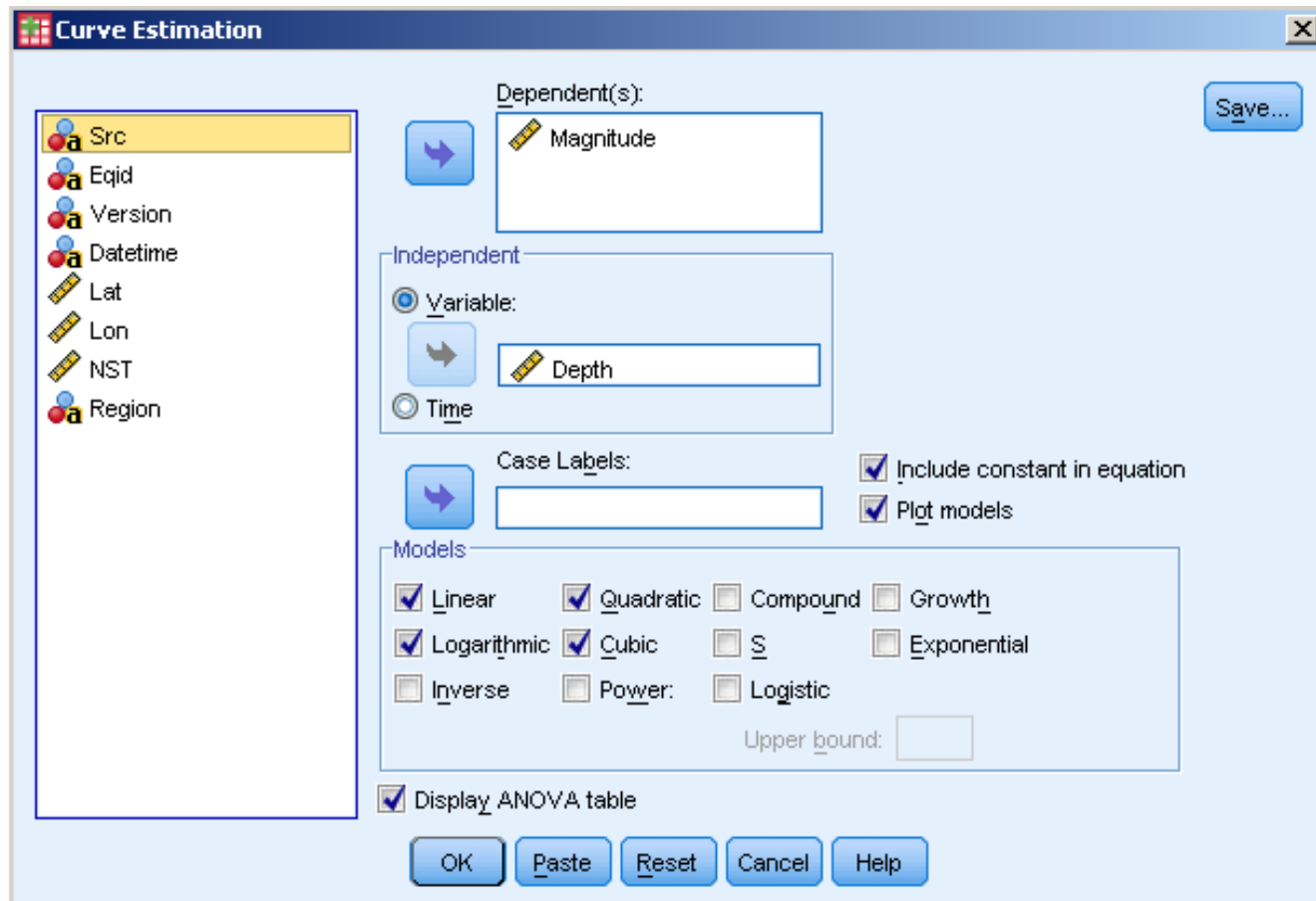
in CS 130 Public

- Analyze |
- Regress |
- Curve Estimation

The screenshot shows the PASW Statistics Data Editor interface. The title bar reads "EarthQuake7DayM25_orig.sav [DataSet 1] - PASW Statistics Data Editor". The menu bar includes File, Edit, View, Data, Transform, Analyze, Graphs, Utilities, Add-ons, Window, and Help. The Analyze menu is open, showing options like Reports, Descriptive Statistics, Compare Means, General Linear Model, Generalized Linear Models, Mixed Models, Correlate, Regression, Loglinear, Classify, Dimension Reduction, Scale, Nonparametric Tests, Forecasting, Survival, Multiple Response, Quality Control, and ROC Curve... The Regression menu is further expanded to show Linear..., Curve Estimation..., Partial Least Squares..., Binary Logistic..., Multinomial Logistic..., Ordinal..., Probit..., Nonlinear..., Weight Estimation..., and 2-Stage Least Squares... The data grid below the menu shows columns for Src, Eqid, and other variables. The first row of data is highlighted.

	Src	Eqid	V
1	us	b0001mgd	4
2	us	b0001mg2	5
3	nc	71530295	1
4	nc	71530230	6
5	ak	10182565	1
6	us	b0001mfa	9
7	us	b0001mej	5
8	us	b0001m9j	6
9	us	b0001m4j	7
10	ak	10182353	2
11	us	b0001lvz	5
12	us	2011hxbb	3
13	ak	10182270	1
14	nm	022811f	A
15	nm	022811e	A

Regressions continued



Model Summary and Parameter Estimates

Dependent Variable: Magnitude

Equation	Model Summary					Parameter Estimates		
	R Square	F	df1	df2	Sig.	Constant	b1	b2
Linear	.061	11.765	1	181	.001	3.578	.003	
Quadratic	.074	7.173	2	180	.001	3.495	.006	-7.097E-6

The independent variable is Depth.

Equations?

R²?

