



# PASW Regression

Spring 2011

# Regression

## EarthQuakeSmall.sav

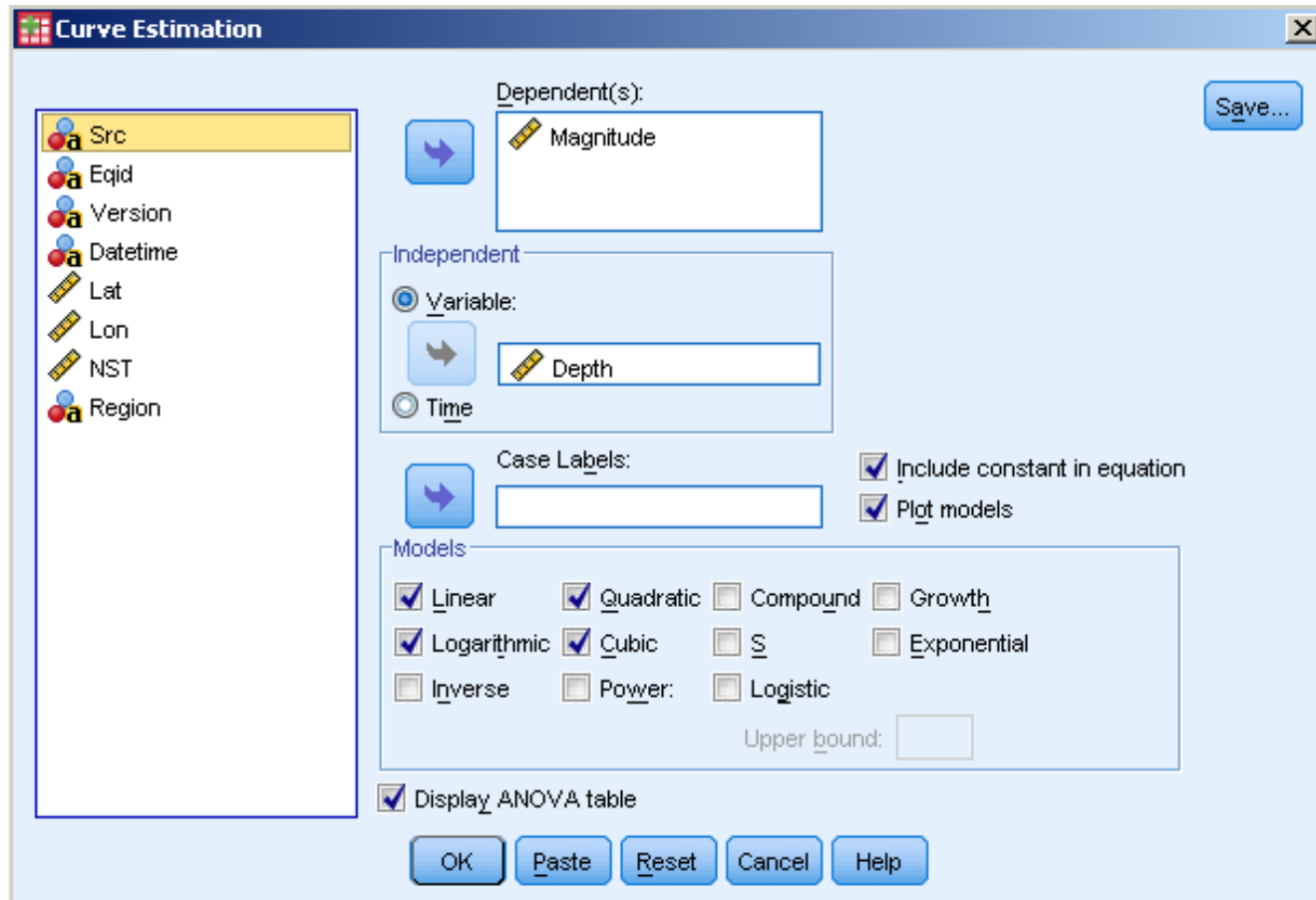
### in CS 130 Public

- Analyze |
- Regress |
- Curve Estimation

The screenshot shows the PASW Statistics Data Editor interface. The title bar reads "EarthQuake7DayM25\_orig.sav [DataSet 1] - PASW Statistics Data Editor". The menu bar includes File, Edit, View, Data, Transform, Analyze, Graphs, Utilities, Add-ons, Window, and Help. The Analyze menu is open, showing options like Reports, Descriptive Statistics, Compare Means, General Linear Model, Generalized Linear Models, Mixed Models, Correlate, Regression (highlighted), Loglinear, Classify, Dimension Reduction, Scale, Nonparametric Tests, Forecasting, Survival, Multiple Response, and Quality Control. The Regression submenu is also open, showing options like Linear..., Curve Estimation... (highlighted), Partial Least Squares..., Binary Logistic..., Multinomial Logistic..., Ordinal..., Probit..., Nonlinear..., Weight Estimation..., and 2-Stage Least Squares... The data editor window shows a table with columns Src, Eqid, and a variable view section. The data table has 15 rows, with the first row highlighted. The variable view section shows a variable named "tetime" with a value of "11 03:46:29 UTC".

	Src	Eqid	
1	us	b0001mgd	4
2	us	b0001mg2	5
3	nc	71530295	1
4	nc	71530230	6
5	ak	10182565	1
6	us	b0001mfa	9
7	us	b0001mej	5
8	us	b0001m9j	6
9	us	b0001m4j	7
10	ak	10182353	2
11	us	b0001lvz	5
12	us	2011hxbb	3
13	ak	10182270	1
14	nm	022811f	A
15	nm	022811e	A

# Regressions continued



### Model Summary and Parameter Estimates

Dependent Variable: Magnitude

Equation	Model Summary					Parameter Estimates		
	R Square	F	df1	df2	Sig.	Constant	b1	b2
Linear	.061	11.765	1	181	.001	3.578	.003	
Quadratic	.074	7.173	2	180	.001	3.495	.006	-7.097E-6

The independent variable is Depth.

Equations?

R<sup>2</sup>?

