

# SPSS Regression

Spring 2015

# Regression

## EarthQuakeSmall.sav

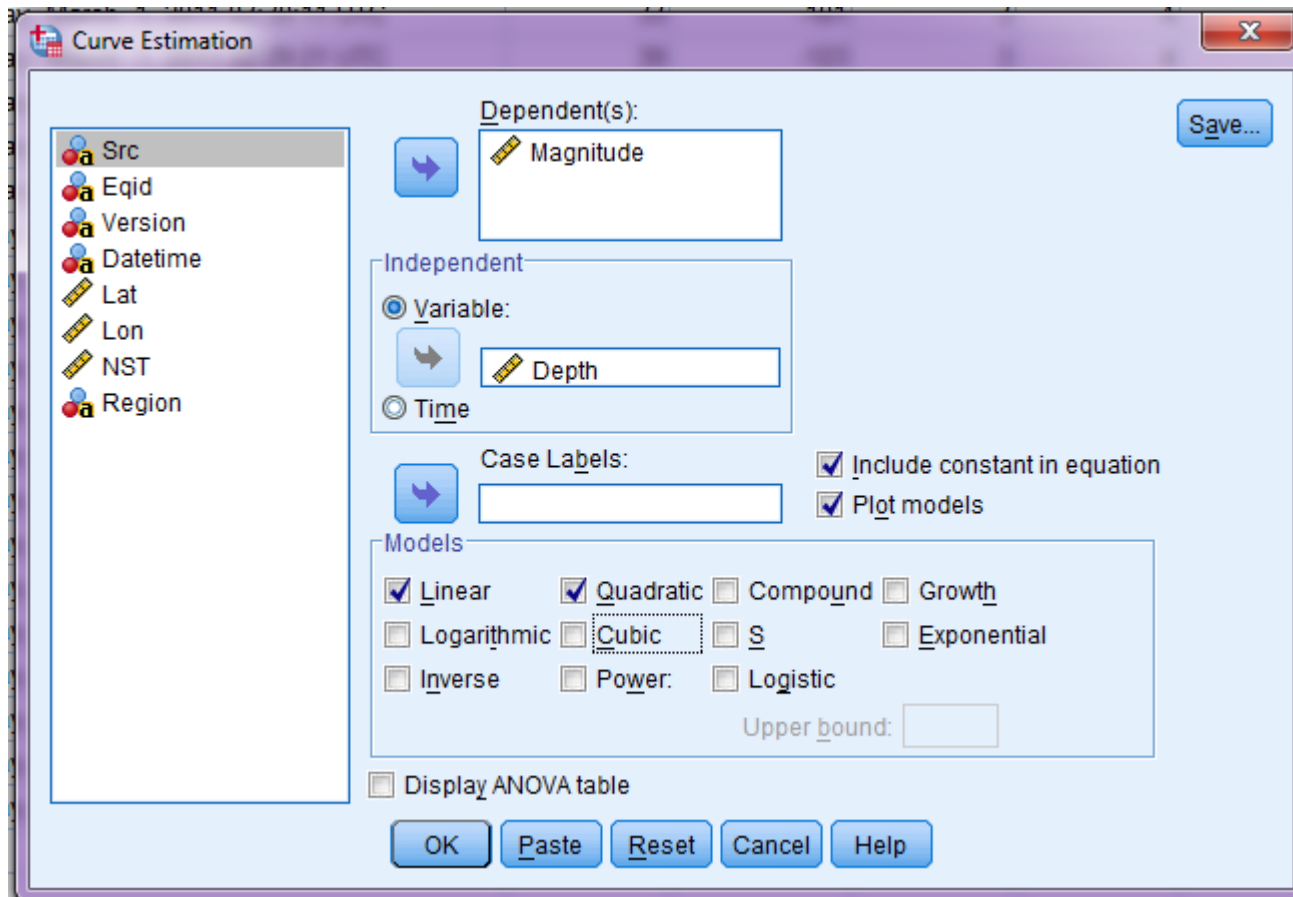
### in CS 130 Public

- Analyze |
- Regression |
- Curve Estimation

The screenshot shows the PASW Statistics Data Editor interface. The title bar reads "EarthQuake7DayM25\_orig.sav [DataSet 1] - PASW Statistics Data Editor". The menu bar includes File, Edit, View, Data, Transform, Analyze, Graphs, Utilities, Add-ons, Window, and Help. The Analyze menu is open, showing options like Reports, Descriptive Statistics, Compare Means, General Linear Model, Generalized Linear Models, Mixed Models, Correlate, Regression, Loglinear, Classify, Dimension Reduction, Scale, Nonparametric Tests, Forecasting, Survival, Multiple Response, and Quality Control. The Regression menu is further expanded to show Linear..., Curve Estimation..., Partial Least Squares..., Binary Logistic..., Multinomial Logistic..., Ordinal..., Probit..., Nonlinear..., Weight Estimation..., and 2-Stage Least Squares... The data grid below the menu shows columns for Src, Eqid, and other variables. The status bar at the bottom indicates the date and time: Monday, February 28, 2011 13:15:53 UTC.

	Src	Eqid	V
1	us	b0001mgd	4
2	us	b0001mg2	5
3	nc	71530295	1
4	nc	71530230	6
5	ak	10182565	1
6	us	b0001mfa	9
7	us	b0001mej	5
8	us	b0001m9j	6
9	us	b0001m4j	7
10	ak	10182353	2
11	us	b0001lvz	5
12	us	2011hxbb	3
13	ak	10182270	1
14	nm	022811f	A
15	nm	022811e	A

# Regressions continued

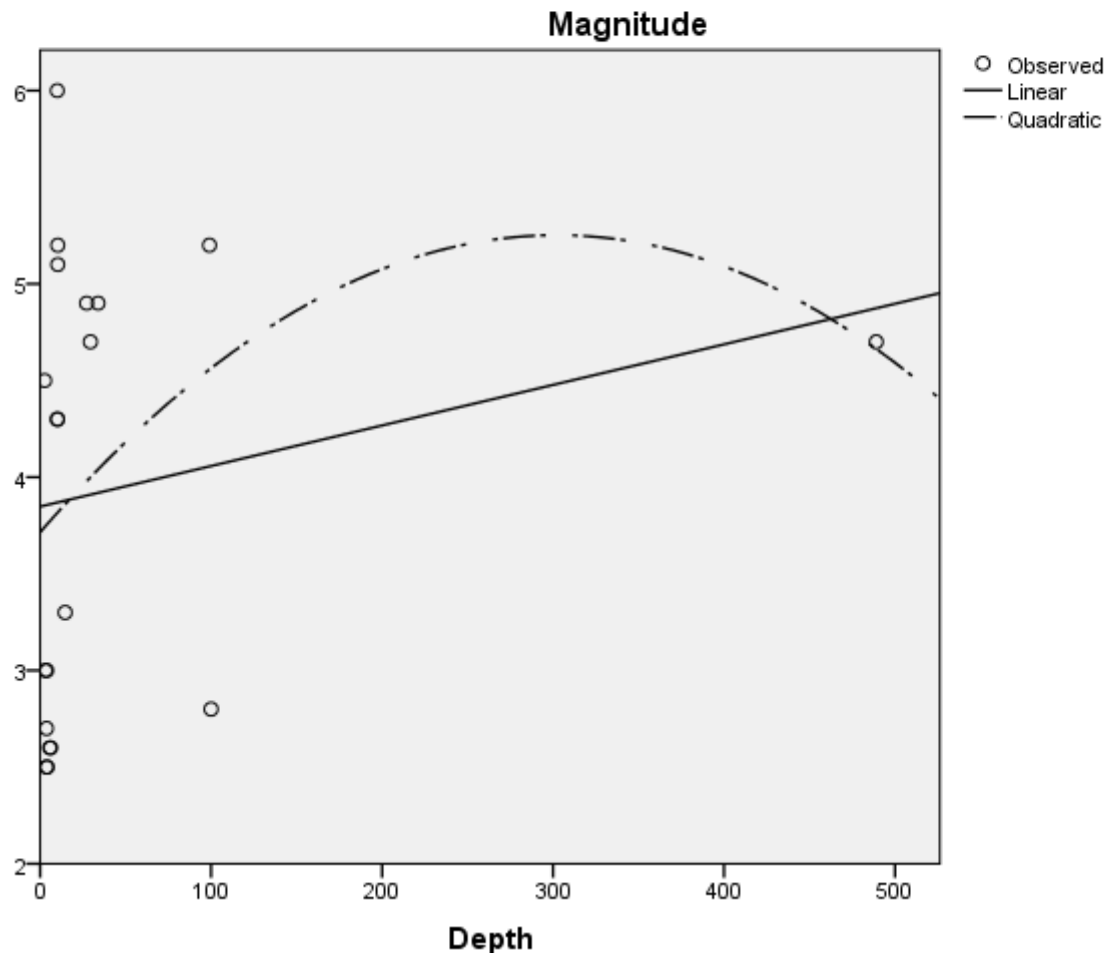


Model Summary and Parameter Estimates								
Dependent Variable: Magnitude								
Equation	Model Summary					Parameter Estimates		
	R Square	F	df1	df2	Sig.	Constant	b1	b2
Linear	.039	.737	1	18	.402	3.848	.002	
Quadratic	.066	.603	2	17	.558	3.715	.010	-1.685E-005

The independent variable is Depth.

Equations?

R<sup>2</sup>?



**y =**  
**x =**

**Linear:**  
 $y = mx + b$

m =  
b =

**Quadratic:**  
 $y = ax^2 + bx + c$

a =  
b =  
c =