



# SPSS Regression

Winter 2012

# Regression

## EarthQuakeSmall.sav

### in CS 130 Public

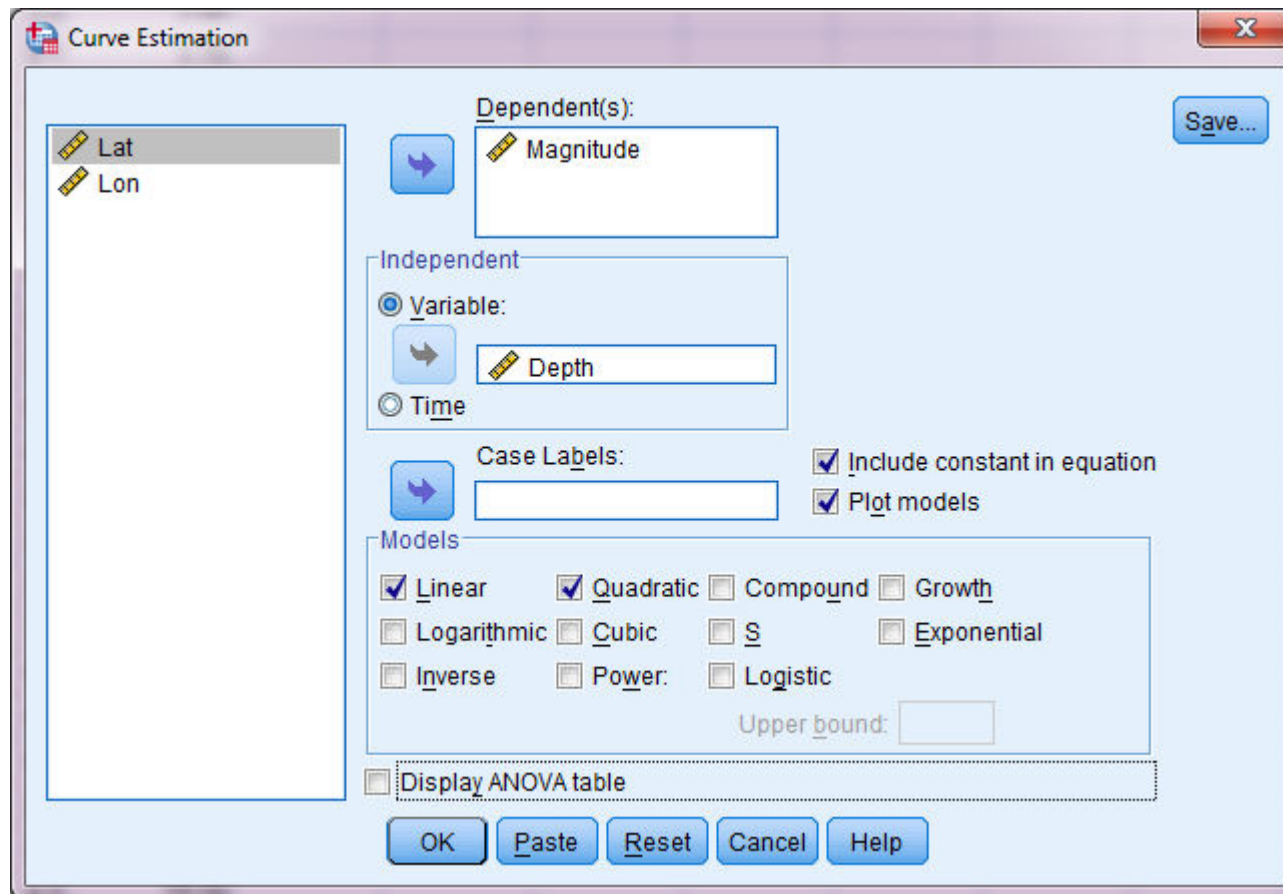
- Analyze |
- Regress |
- Curve Estimation

The screenshot shows the PASW Statistics Data Editor interface. The title bar reads "EarthQuake7DayM25\_orig.sav [DataSet1] - PASW Statistics Data Editor". The menu bar includes File, Edit, View, Data, Transform, Analyze, Graphs, Utilities, Add-ons, Window, and Help. The Analyze menu is open, showing options like Reports, Descriptive Statistics, Compare Means, General Linear Model, Generalized Linear Models, Mixed Models, Correlate, Regression (highlighted), Loglinear, Classify, Dimension Reduction, Scale, Nonparametric Tests, Forecasting, Survival, Multiple Response, and Quality Control. The Regression submenu is also open, showing options like Linear..., Curve Estimation..., Partial Least Squares..., Binary Logistic..., Multinomial Logistic..., Ordinal..., Probit..., Nonlinear..., Weight Estimation..., and 2-Stage Least Squares... The data editor window shows a table with columns Src, Eqid, and V. The data rows are as follows:

	Src	Eqid	V
1	us	b0001mgd	4
2	us	b0001mg2	5
3	nc	71530295	1
4	nc	71530230	6
5	ak	10182565	1
6	us	b0001mfa	9
7	us	b0001mej	5
8	us	b0001m9j	6
9	us	b0001m4j	7
10	ak	10182353	2
11	us	b0001lzv	5
12	us	2011hxbb	3
13	ak	10182270	1
14	nm	022811f	A
15	nm	022811e	A

The status bar at the bottom indicates the date and time: "Monday, February 28, 2011 13:15:53 UTC".

# Regressions continued



Equations?

R<sup>2</sup>?

