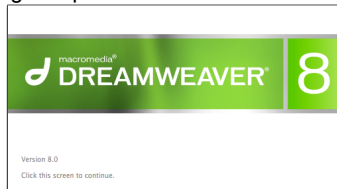


Dreamweaver

- Learning Objectives
 - Become proficient using Dreamweaver 8
 - Images
 - Clickable Image Maps!

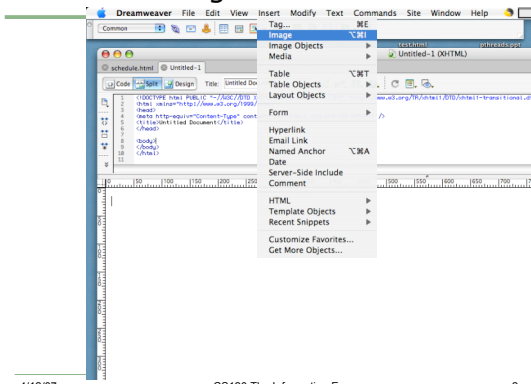


4/12/07

CS120 The Information Era

1

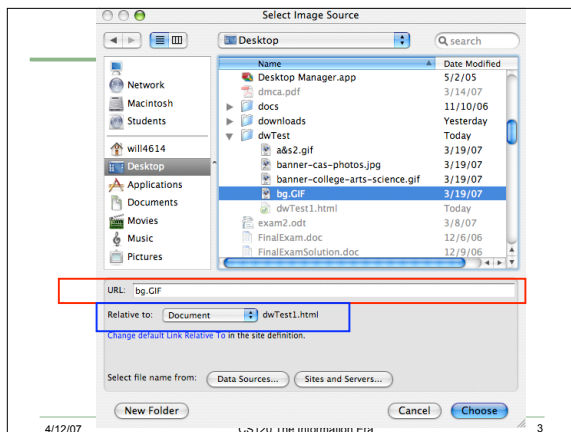
Insert an Image



4/12/07

CS120 The Information Era

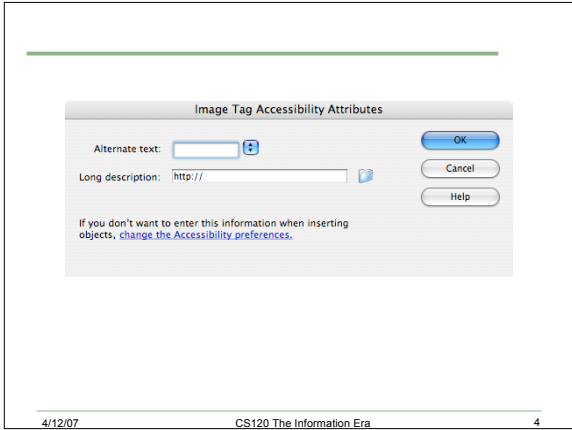
2



4/12/07

CS120 The Information Era

3



Clickable Image Map

- A clickable image map is a graphic that contains "hot spots"
- The "hot spot" can act as a link to another web page
- Insert image
- Define "hot spots"

Hot spot region defined

Image From: <http://www.pd.astro.it>

Clickable Image Map Properties

Insert an image and click on the image to bring up this menu.

1 Unique image map name
2 Tools to create hot spots on the graphic (square, circle, polygon)
3 Source graphic for the image map region
4 A link for the **entire** graphic, **not** a hot spot link

Fill in a unique map name in the Map text box
Select a drawing tool
Draw a hot spot on the image
Fill out link in Hot Spot Properties Window (Next Slide!)

4/12/07 CS120 The Information Era 7

Hot Spot Properties

1 unique image map name
2 hot spot link (get rid of the #)

4/12/07 CS120 The Information Era 8

Polygon Tool

- Select the polygon tool to draw an irregular hot spot
- Click on the image and DreamWeaver will connect the dots to make a polygon!

4/12/07 CS120 The Information Era 9

Practice!

You are to grab the image planets.jpg from the CS120 folder. Create a hot spot for Earth, Jupiter, and Saturn. The link for each hot spot is to take the user to a web page that gives information about the planet selected.

Be sure to cite the image, the image is from:
<http://www.pd.astro.it>

4/12/07

CS120 The Information Era

10

Practice!

- 1) The Pacific University campus map can be found at:
<http://www.pacificu.edu/about/location/campusmap.cfm>
- 2) Create a nice Web page using an image map of the campus such that clicking on Strain Hall goes to <http://www.pacificu.edu/as/naturalsci/> and clicking on the Library takes you to <http://www.pacificu.edu/library/>
- 3) You are to use a table that splits the screen into two regions without using a background graphic.
- 4) Add headings and copyright notices on the Web page.

Make the Web page look professional and make sure the entire page fits on the screen.

4/12/07

CS120 The Information Era

11
