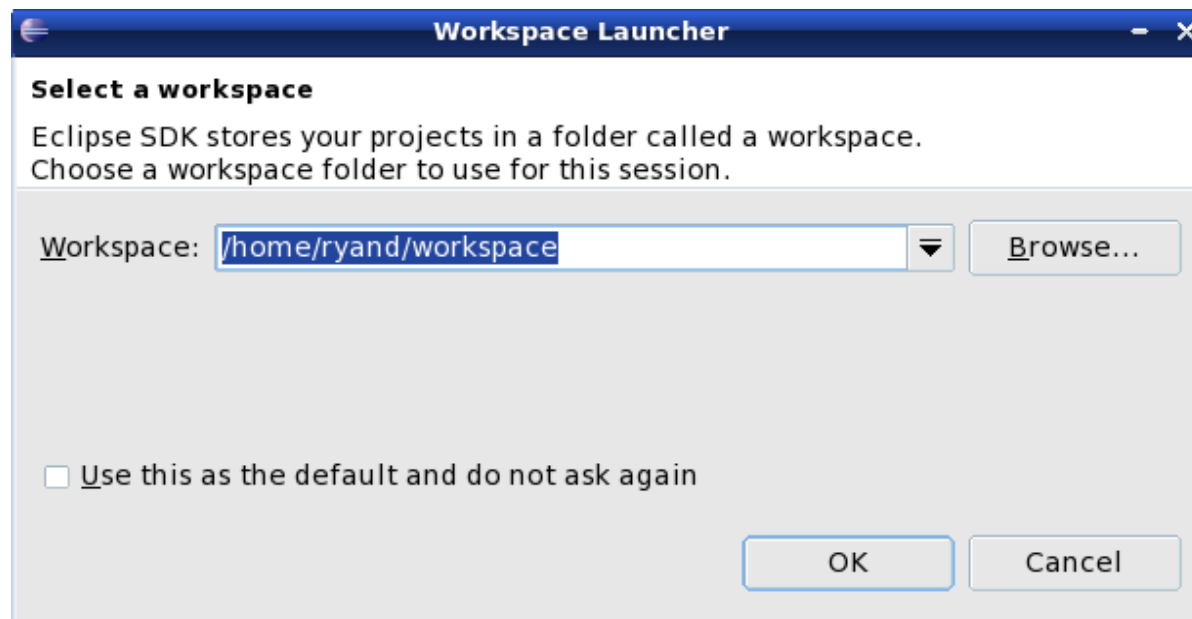
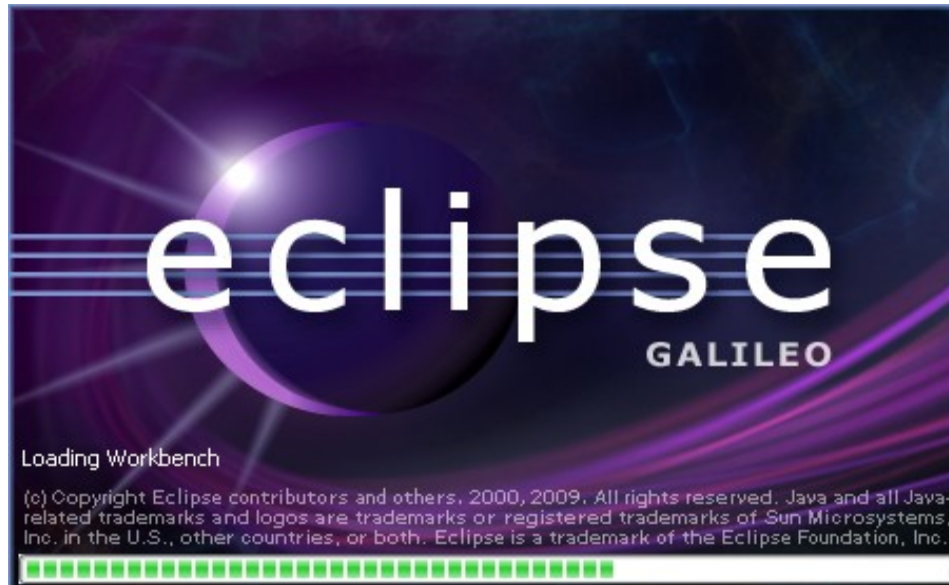


What is Eclipse?

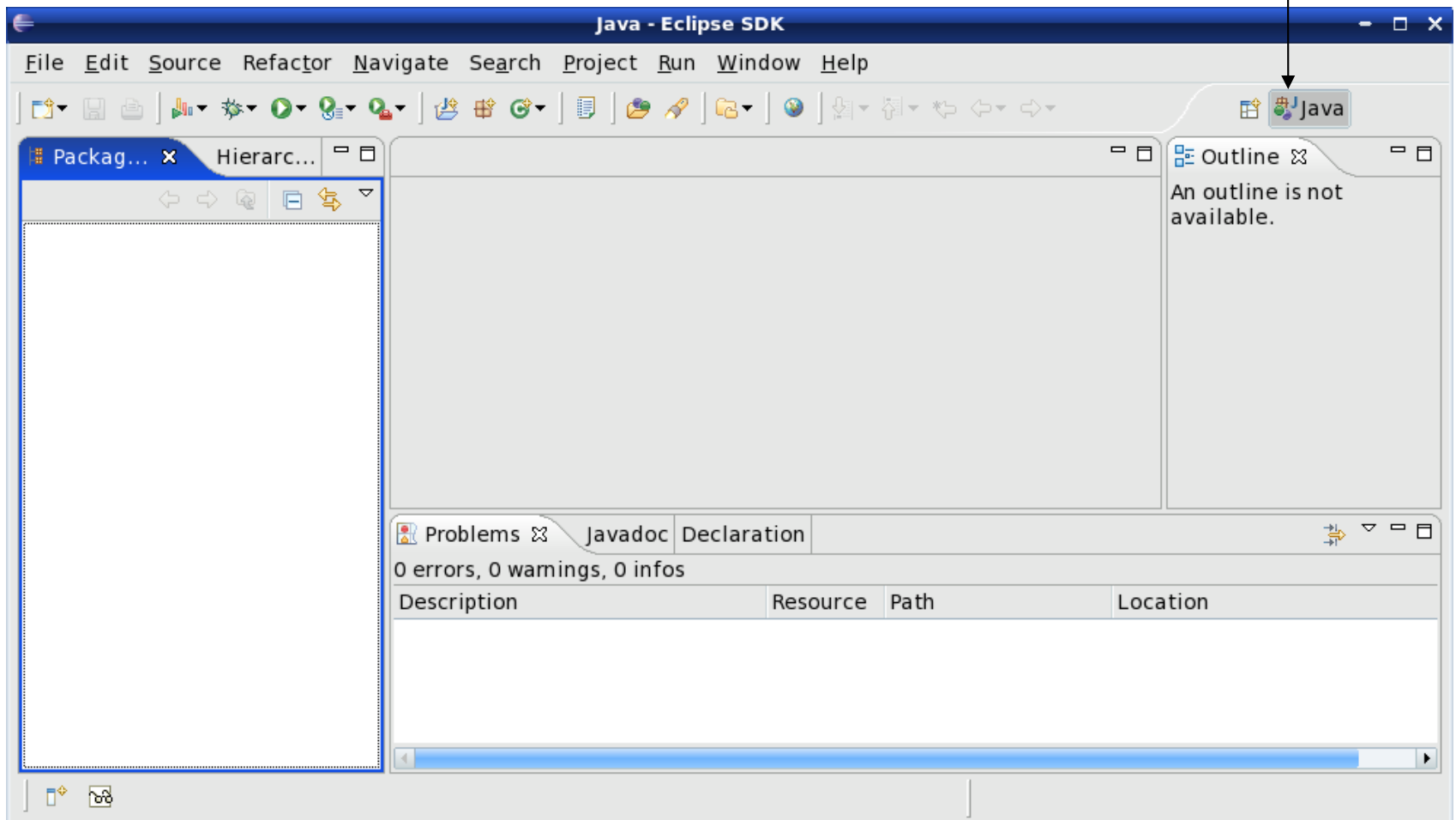
- Eclipse
 - Integrated Development Environment (IDE) that contains an editor, compiler, and debugger among other things
 - Requires a Java Runtime Environment
 - Can develop C, C++, and Java programs

Workspace Launcher

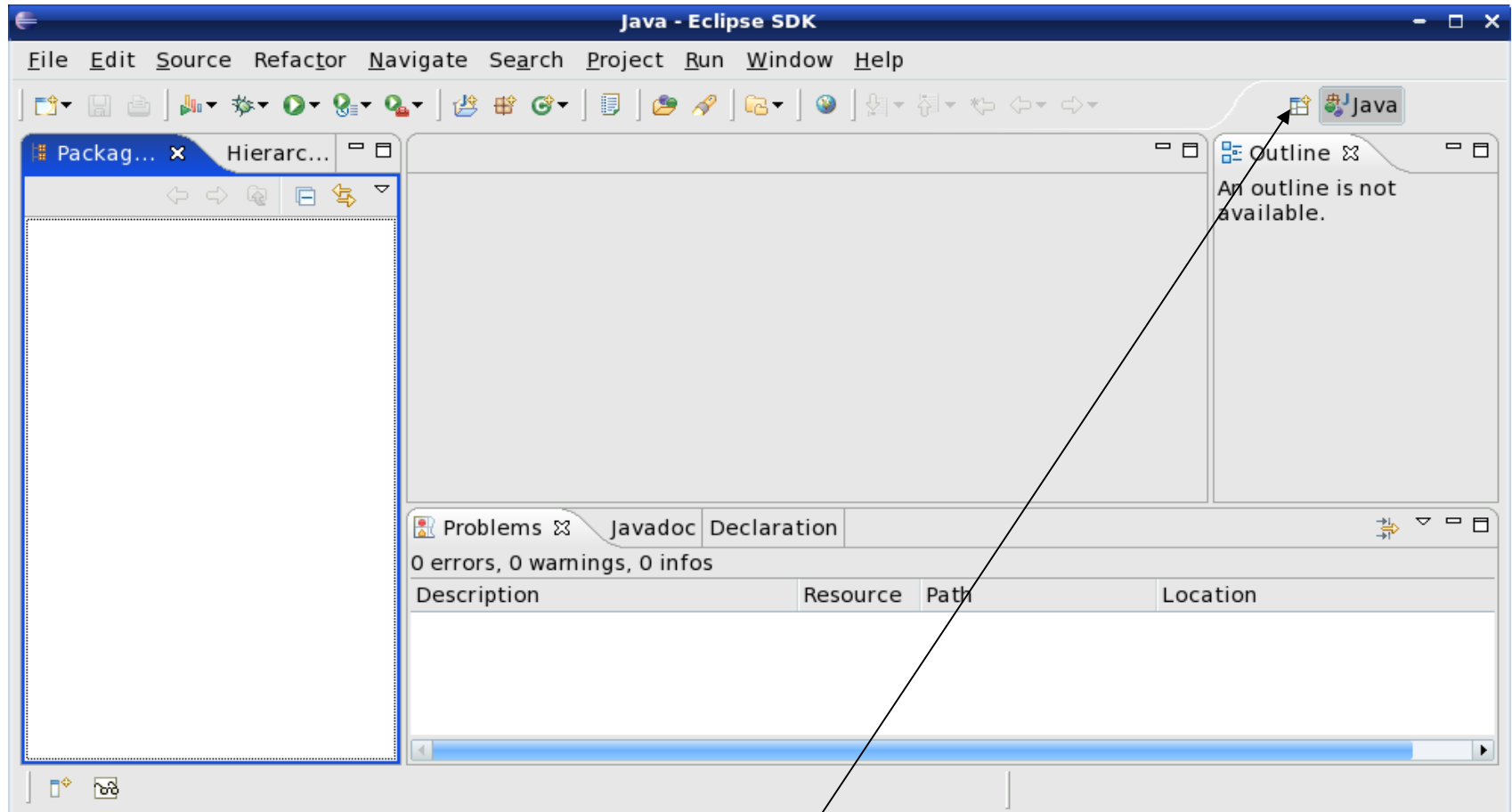


Select the perspective for coding

Make sure the perspective is C/C++ not Java



Changing your perspective for coding



Change the perspective to C/C++ by clicking the icon above.
Then select Other and finally C/C++

Create a new **HelloWorld** project

File → New → C Project

Make sure that the type of project that you create is an “Executable” and “Empty Project”

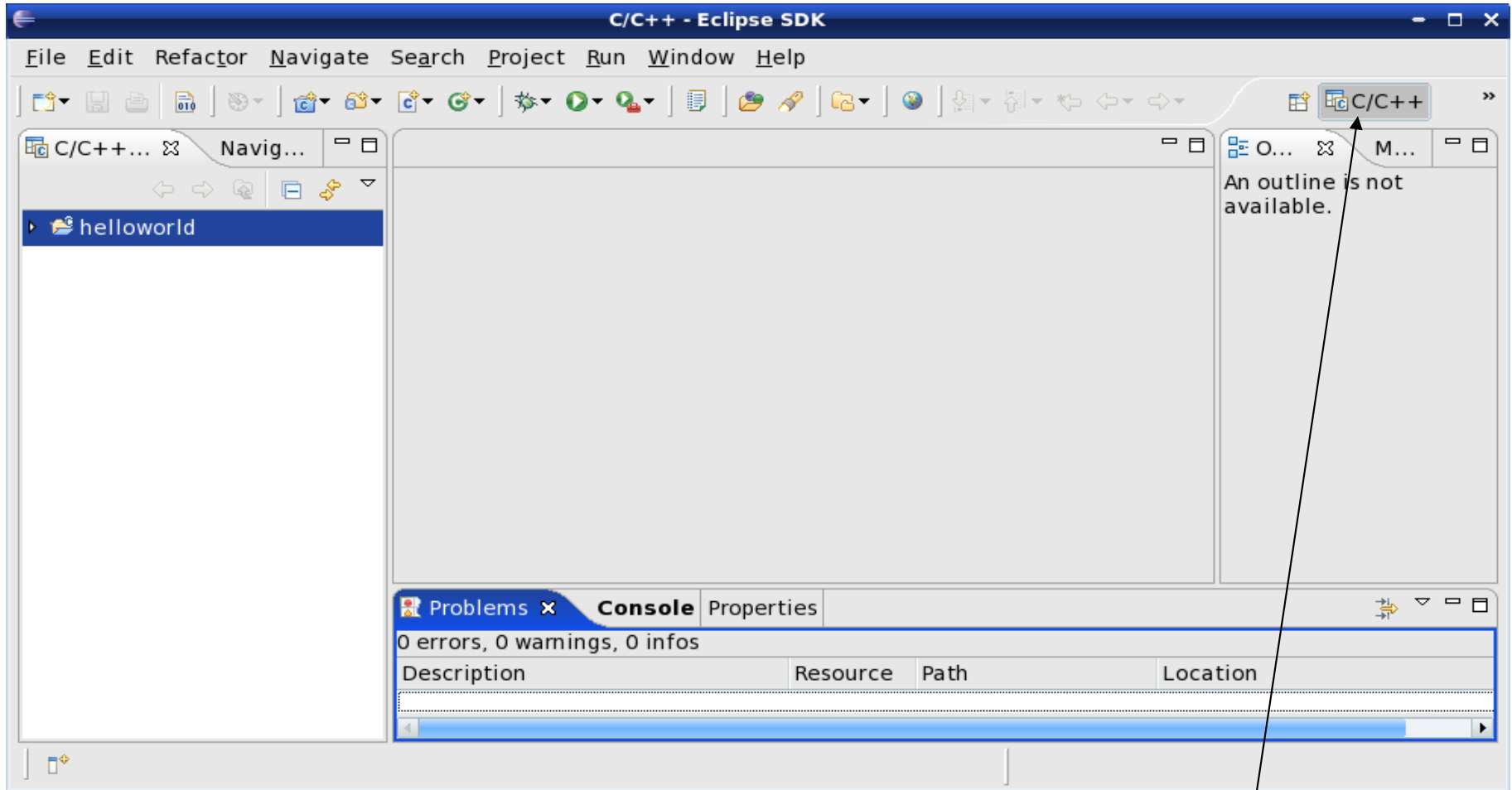
Makefile Project → Empty Project → Linux GCC

Then click Next

Advanced Settings → C/C++ Build → Uncheck
“Generate Makefiles Automatically” → OK

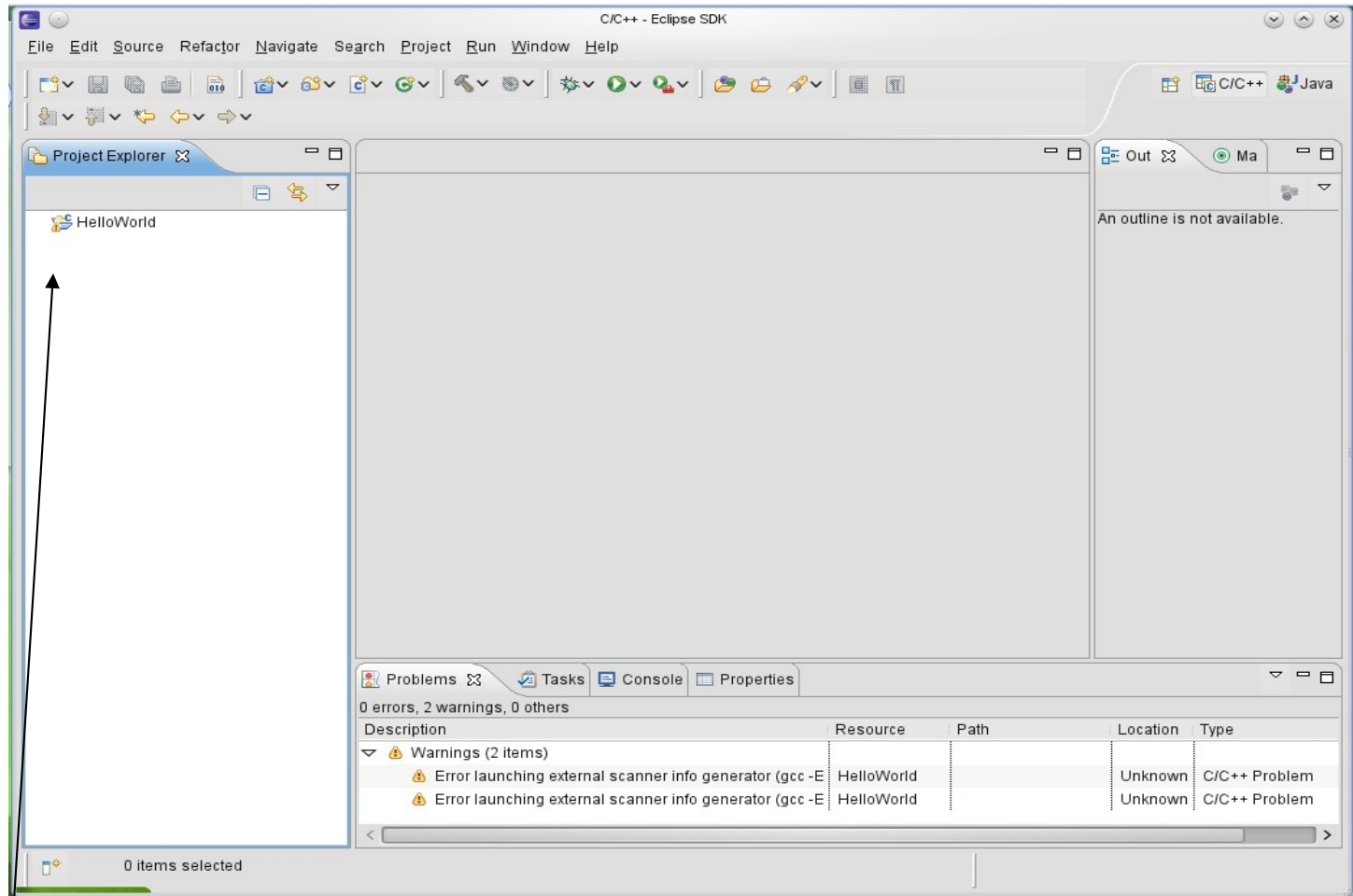
Then Finish

A HelloWorld project



Make sure your perspective is C/C++

What's in a new HelloWorld project?



Expand helloworld and see that no source file exists

Create helloworld.c?

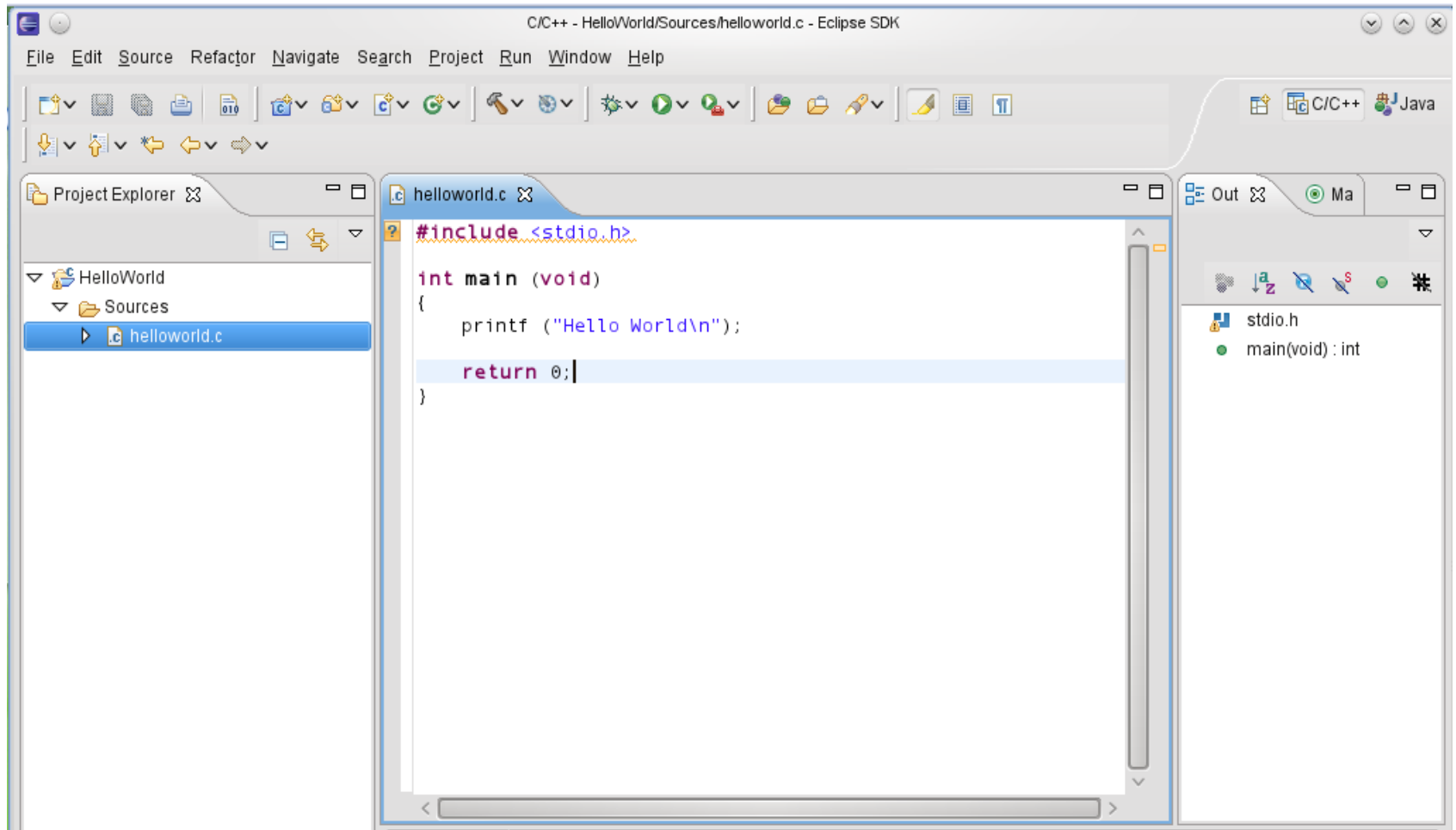
In HelloWorld project, create a folder called **Sources**
Then create a new Source File called **helloworld.c** in the source folder

```
#include <stdio.h>

int main (void)
{
    printf ("Hello World\n");

    return 0;
}
```


Result?



Create a Makefile

You need to create a file called Makefile in the helloworld folder. A Makefile specifies rules of how the executable is to be created.

File → New → File

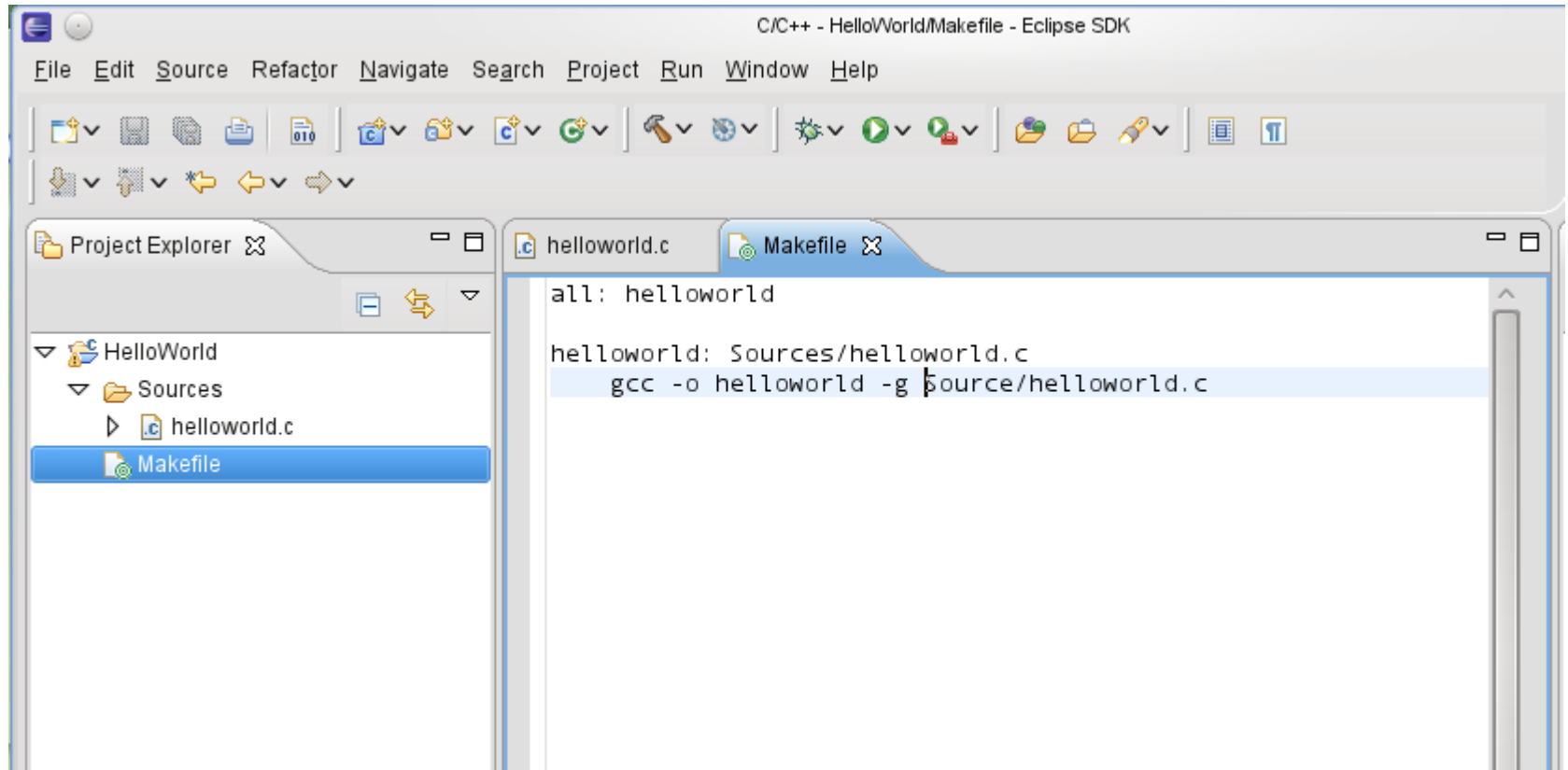
Call the makefile either **Makefile** or **makefile**

The makefile text must be (a single tab character precedes gcc):

```
all: helloworld
```

```
helloworld: Sources/helloworld.c  
    gcc -o helloworld -g Sources/helloworld.c
```

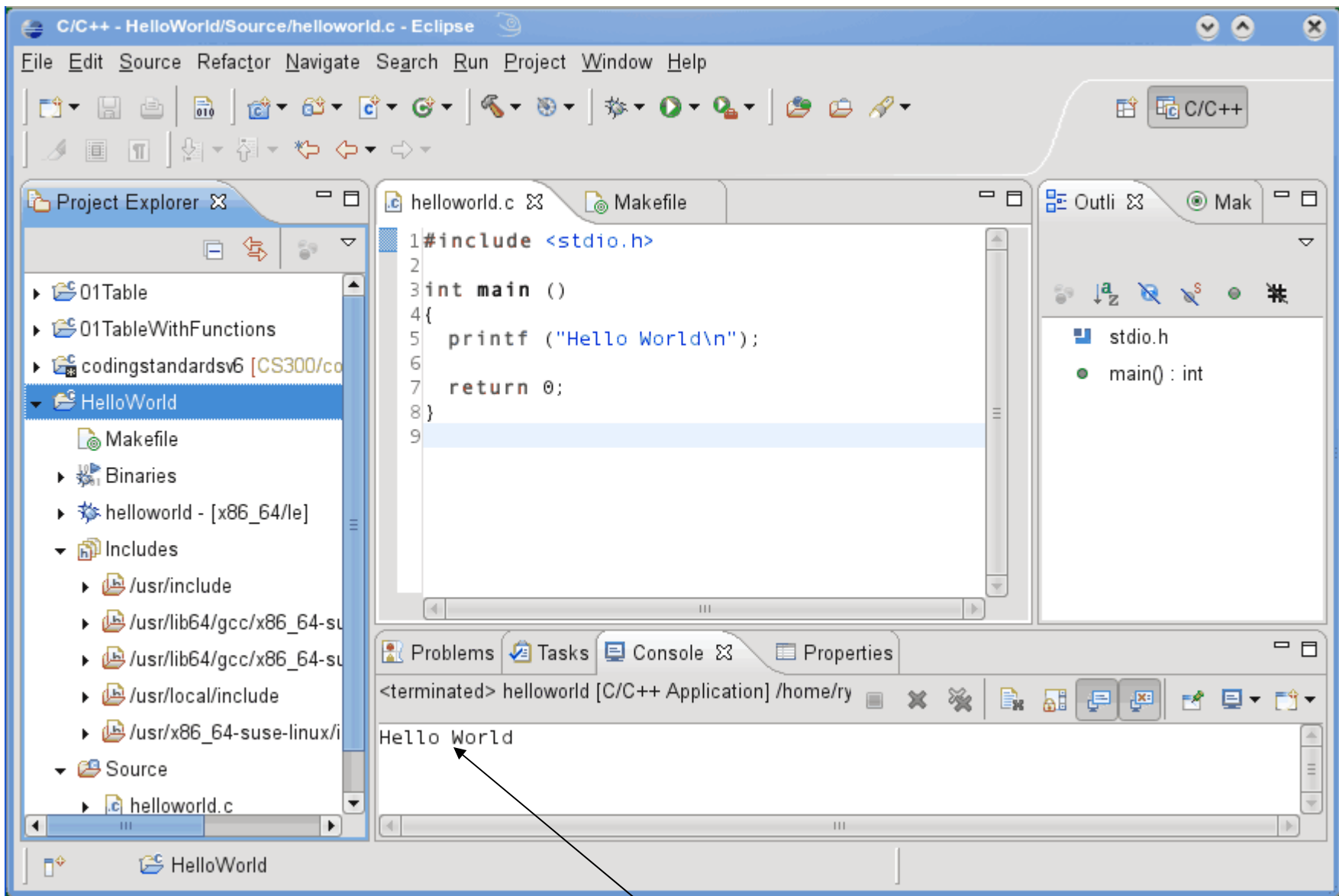
How to build your project ?



Click on HelloWorld, then Project → Build Project

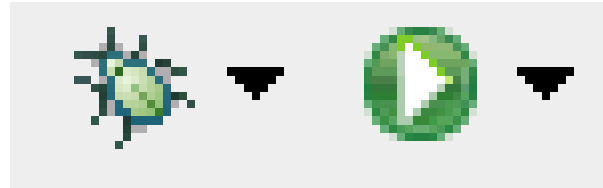
How to run your program?

Then right click on helloworld and Run As → Local C/C++ Application



If all goes well you will see Hello World in the Console window

Run versus Debug



Debug

Run

Printing

- Windows | Preferences
- General | Appearance | Colors and Fonts
- C/C++ | Editor | C/C++ Editor Text Font
 - Use Courier 10 Pitch, Size 8
- This changes the font on the screen!
 - You may want to change back after printing
- Print doubled sided!