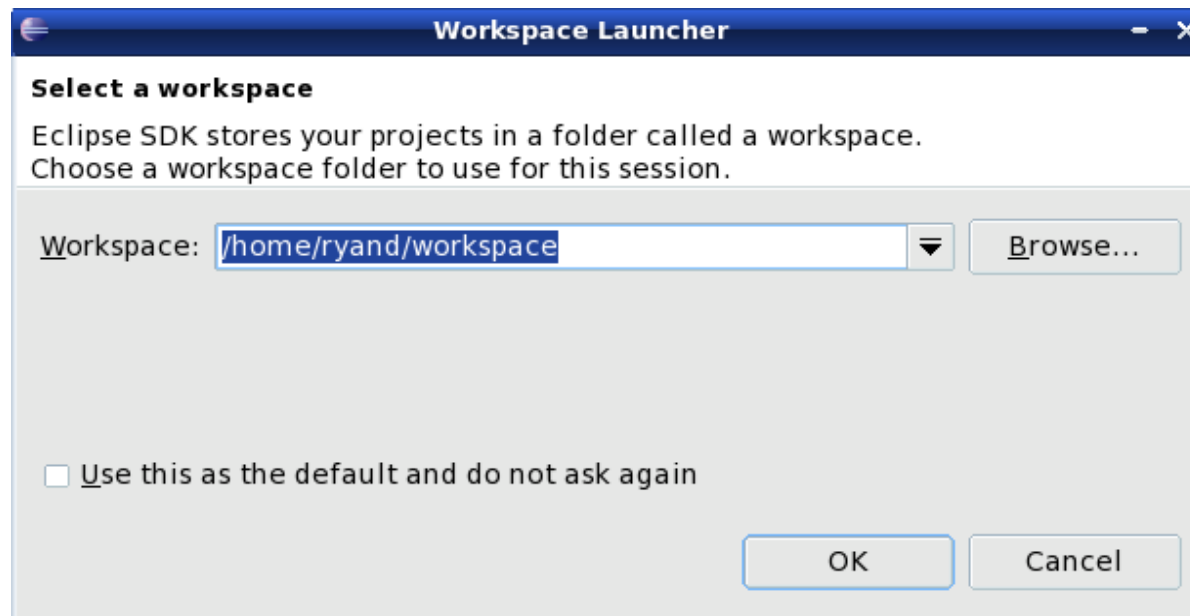


What is Eclipse?

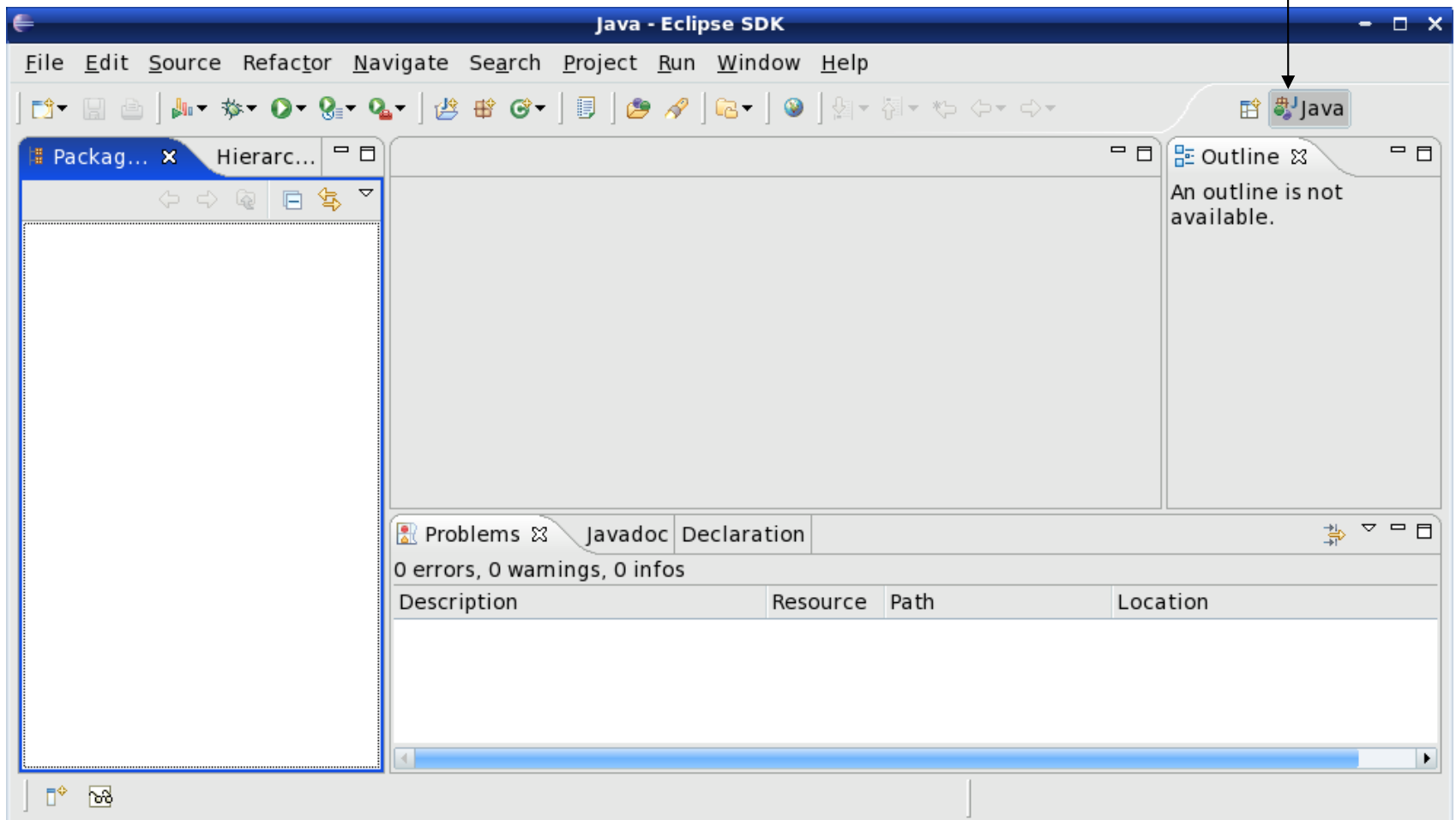
- Eclipse
 - Integrated Development Environment (IDE) that contains an editor, compiler, and debugger among other things
 - Requires a Java Runtime Environment
 - Can develop Java, C, C++, ... programs

Workspace Launcher

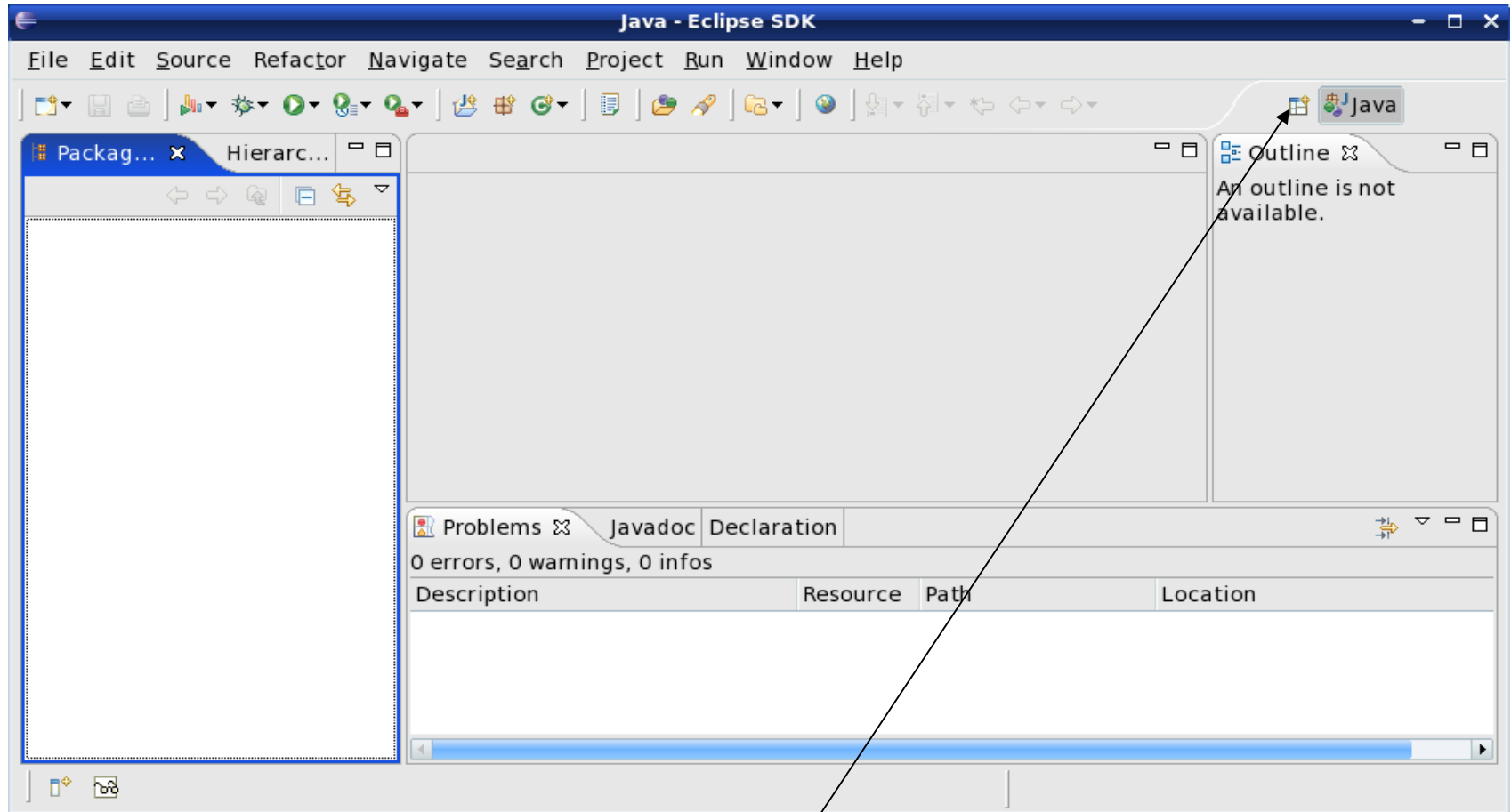


Select the perspective for coding

Make sure the perspective is Java



Changing your perspective for coding



Change your perspective by clicking the icon above. Then select Other and finally the perspective you want

Create a new HelloWorld project

File → New → Java Project

Create a Java Project
Create a Java project in the workspace or in an external location.

Project name: HelloWorld

Use default location
Location: C:\Users\ryandj\workspace\HelloWorld

JRE

Use an execution environment JRE: JavaSE-1.6
 Use a project specific JRE: jre6
 Use default JRE (currently 'jre6')

Project layout

Use project folder as root for sources and class files
 Create separate folders for sources and class files

Working sets

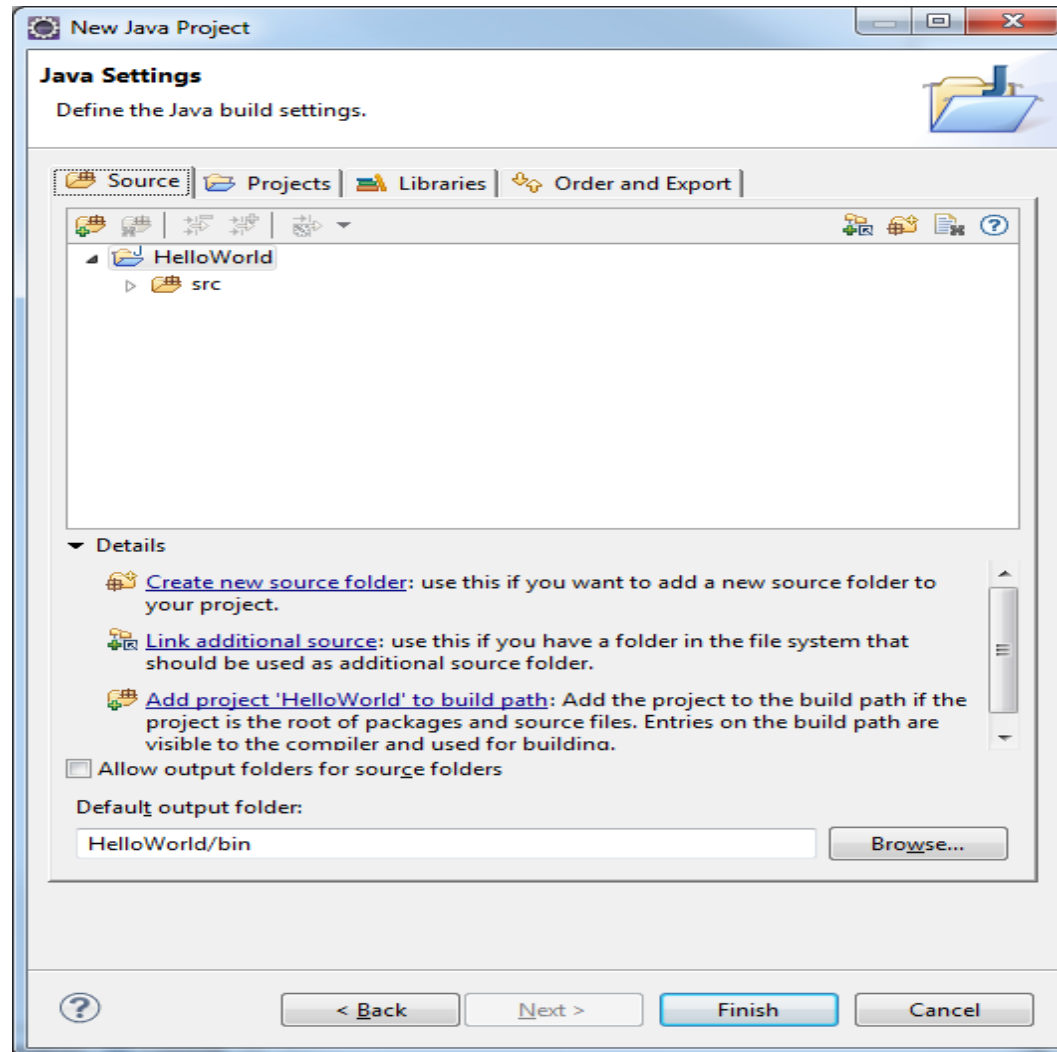
Add project to working sets
Working sets: []

< Back Next > Finish Cancel

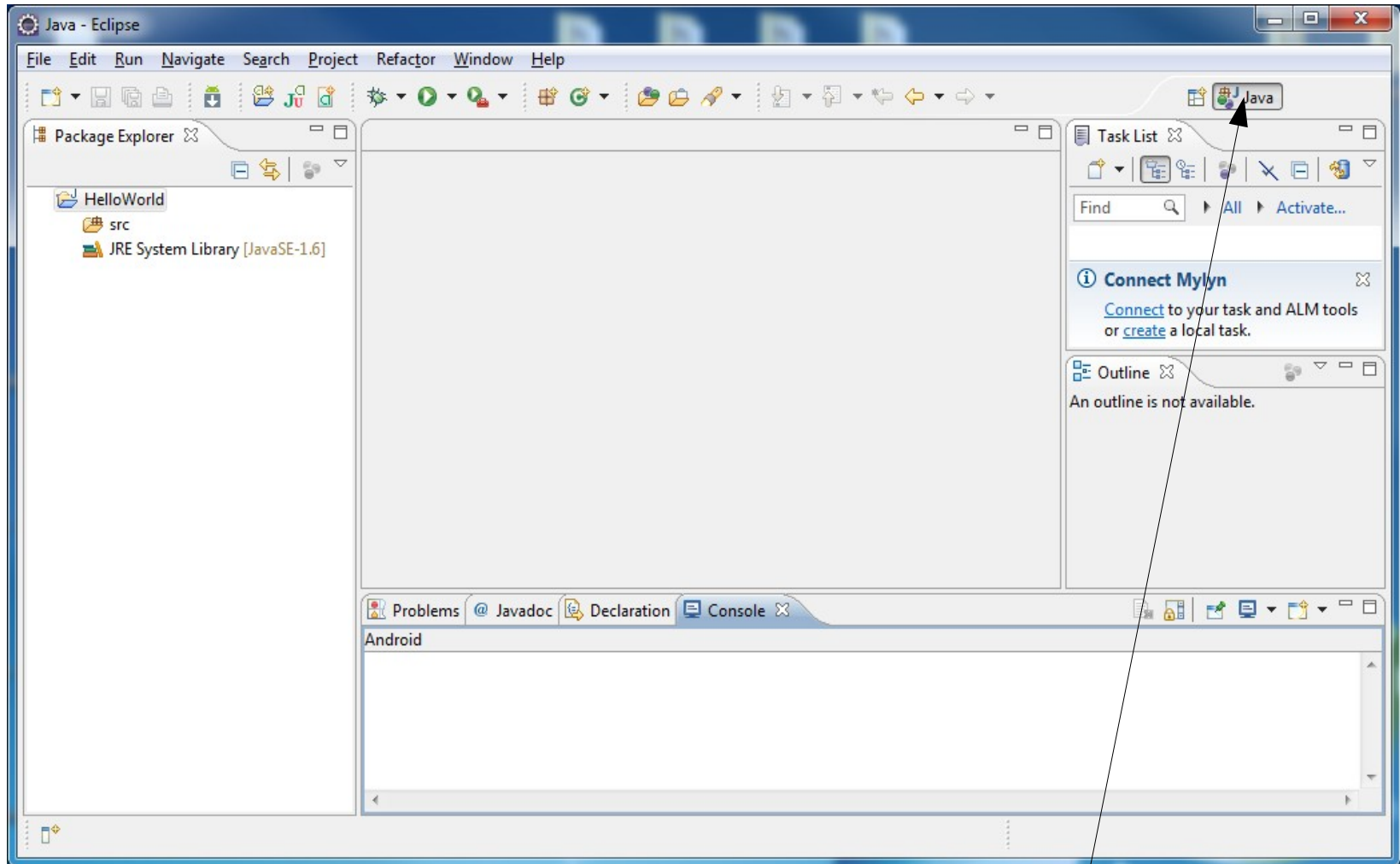
Type in the project name HelloWorld

After clicking the Next button

You can define the build settings

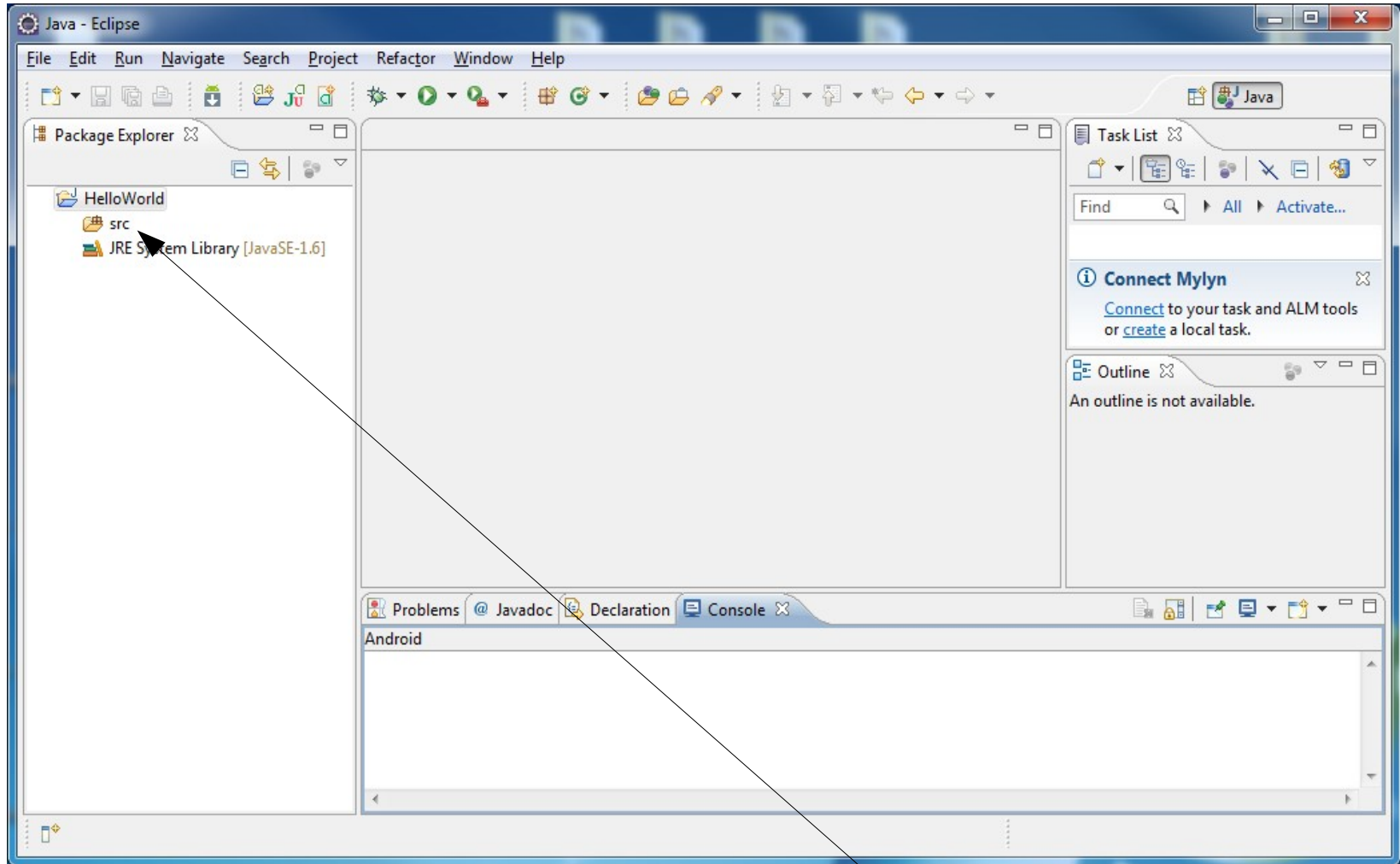


A HelloWorld project



Make sure your perspective is Java

What's in a new HelloWorld project?

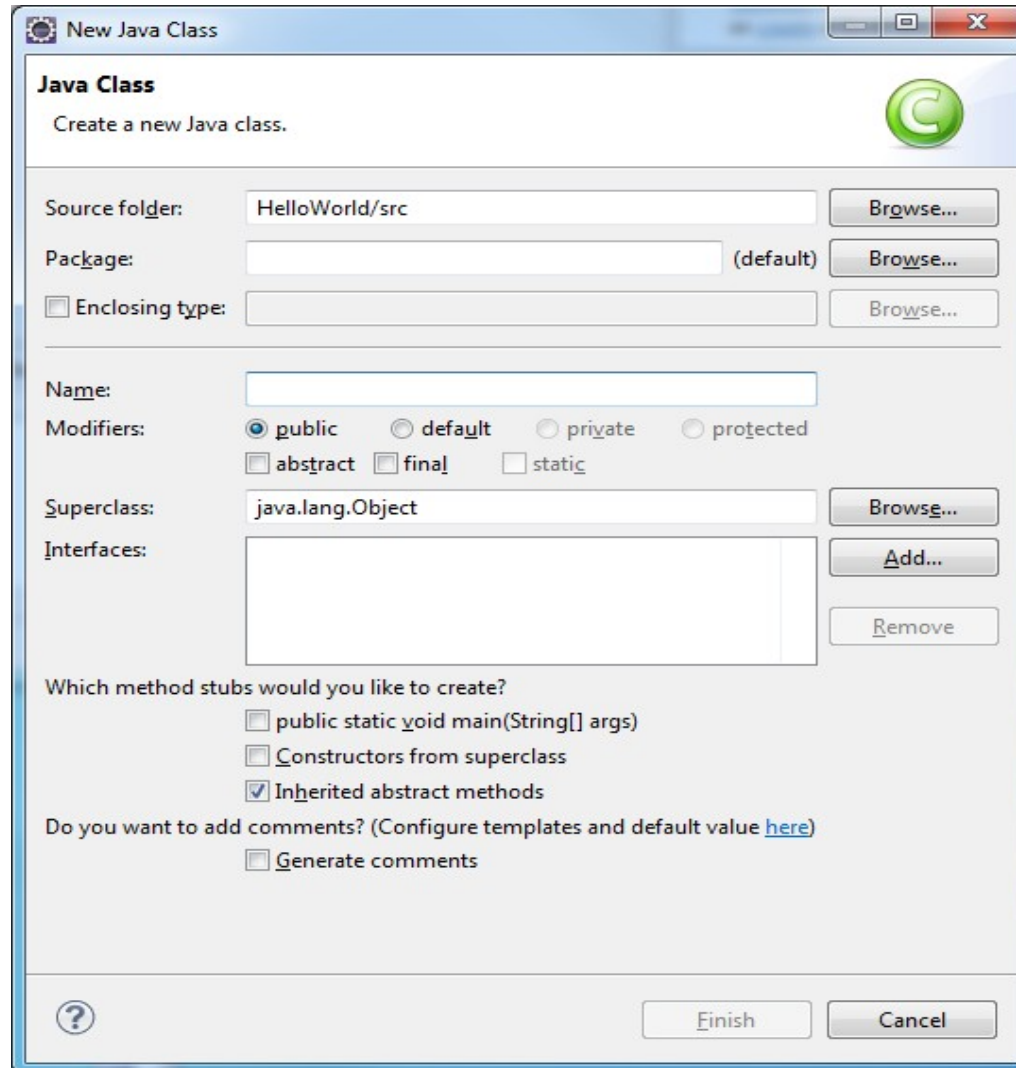


No source file exist yet

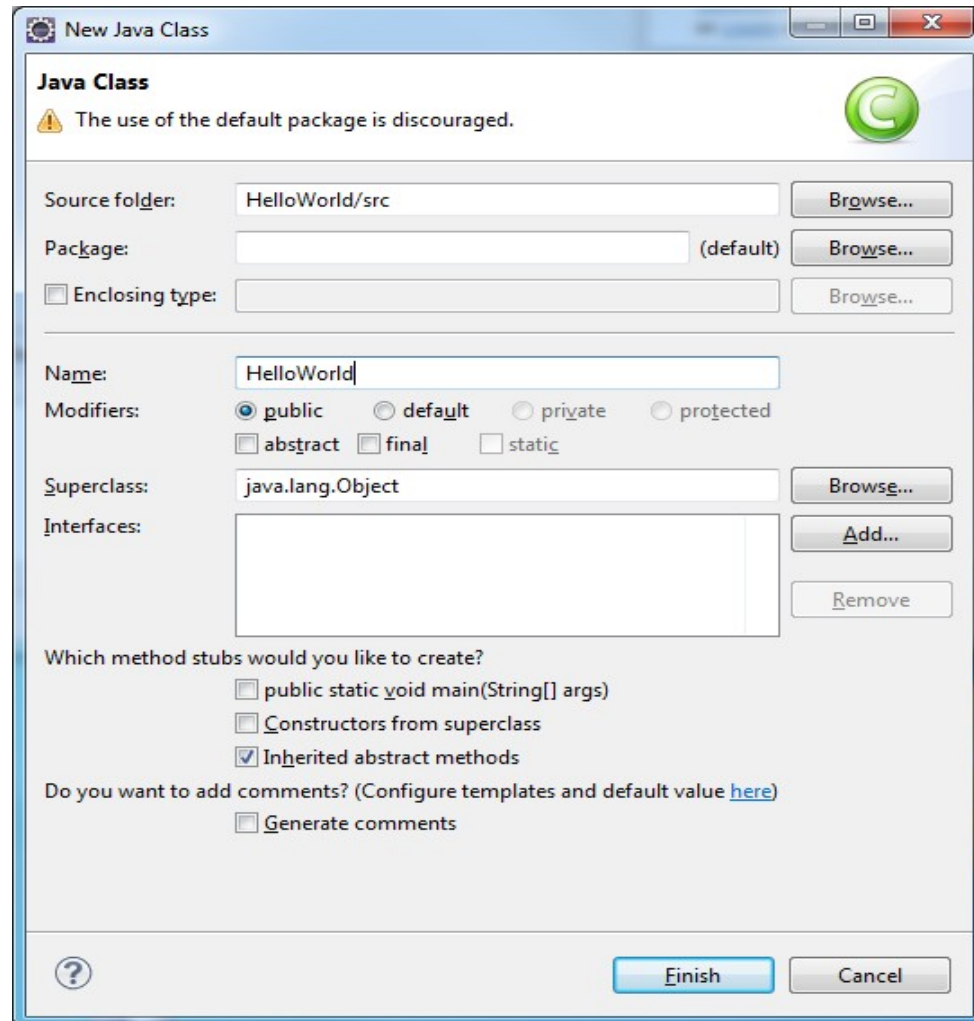
Create HelloWorld.java?

```
public class HelloWorld
{
    public static void main (String[] args)
    {
        System.out.println ("Hello World");
    }
}
```

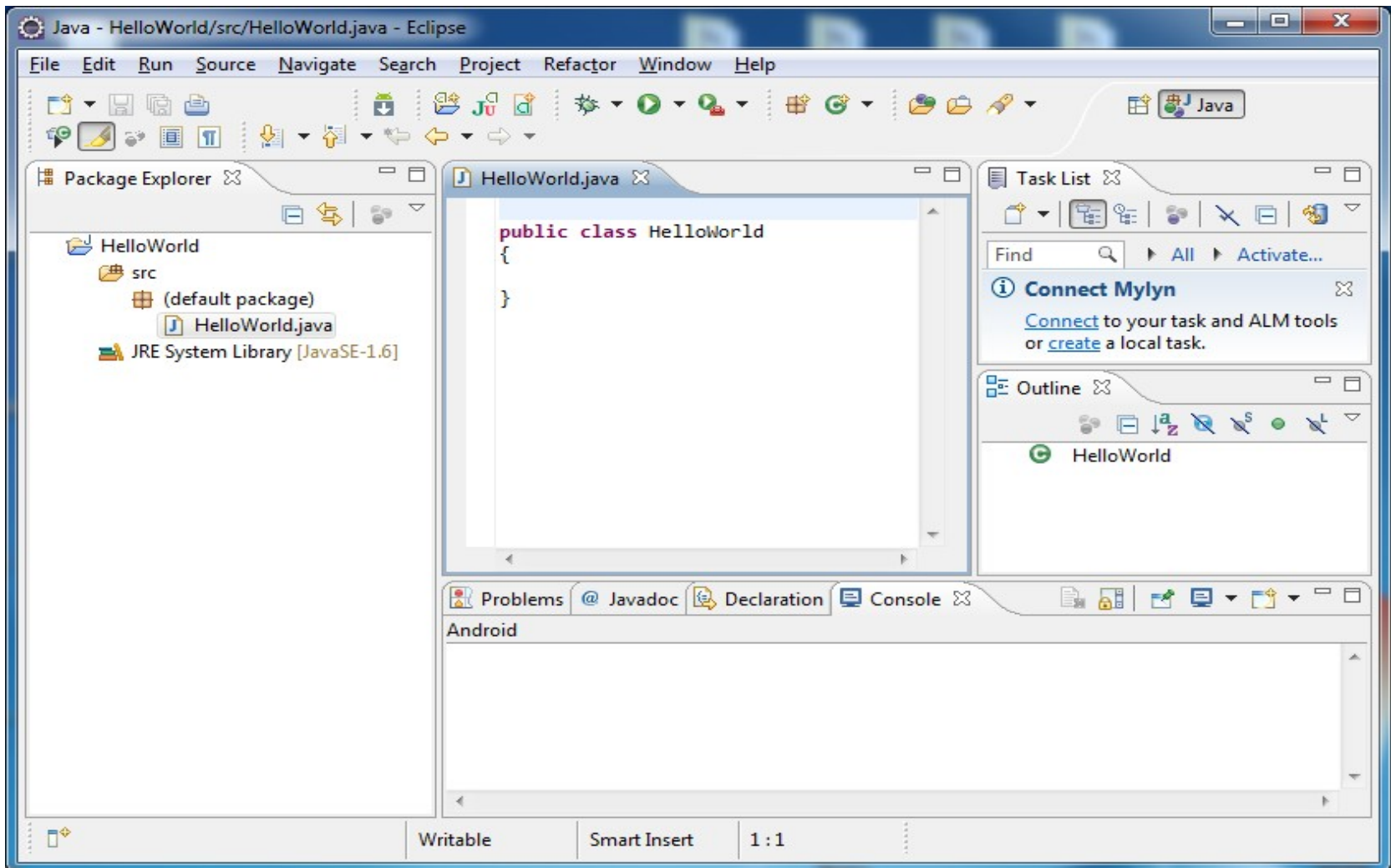
Right click on src, then New->Class



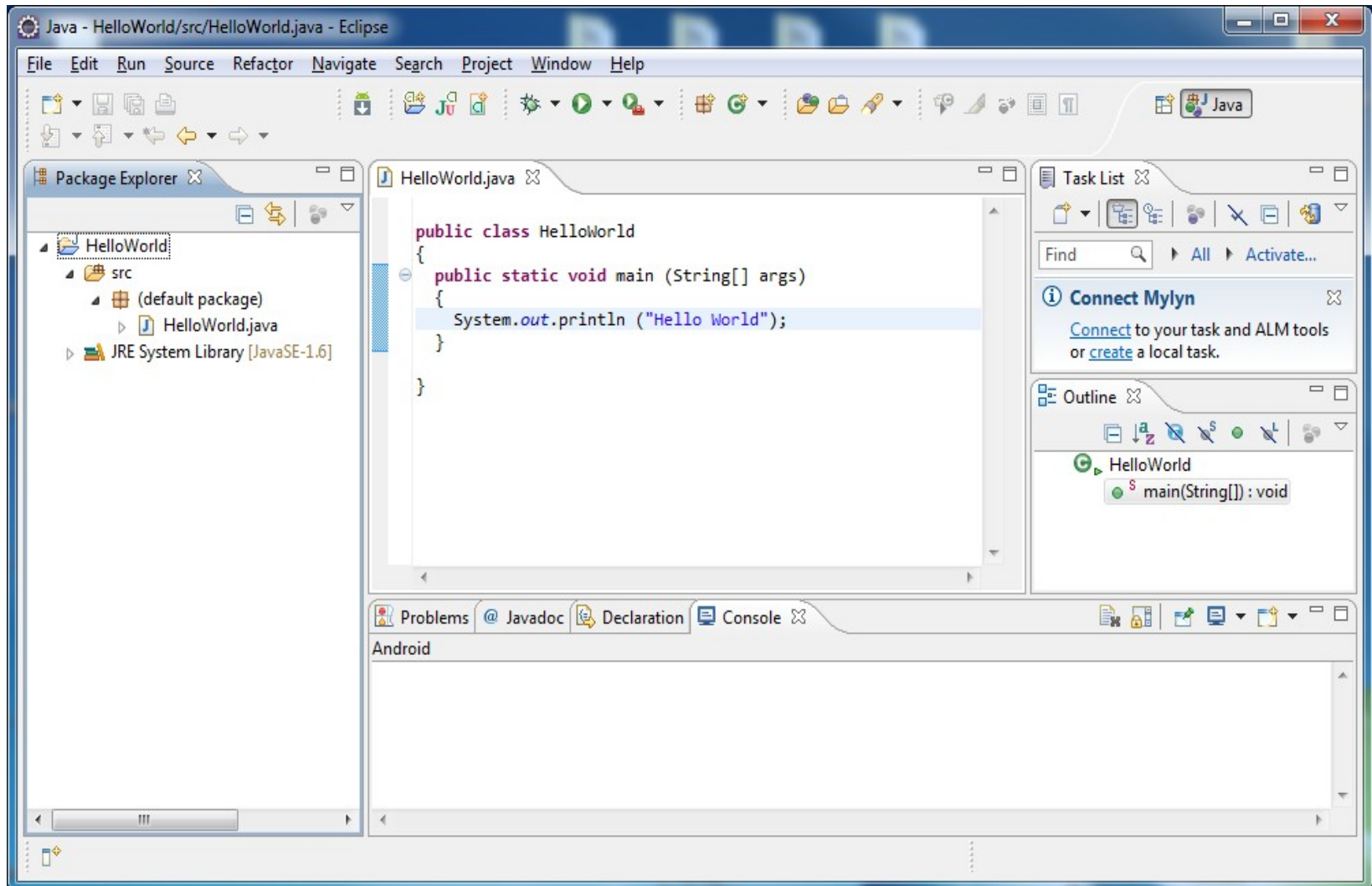
For now, type HelloWorld in Name and leave Package blank



Finish typing in the HelloWorld program



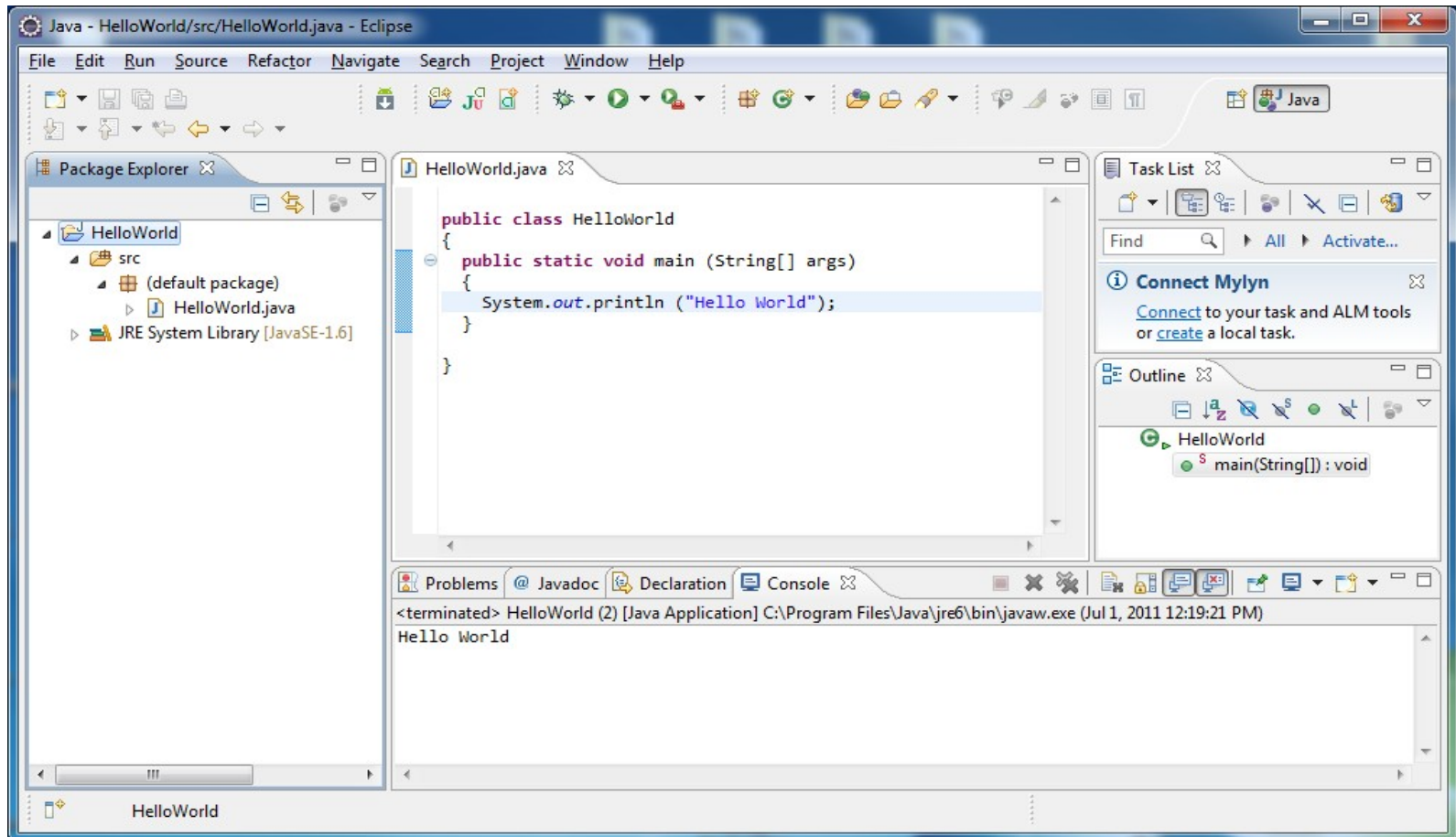
Completed Program



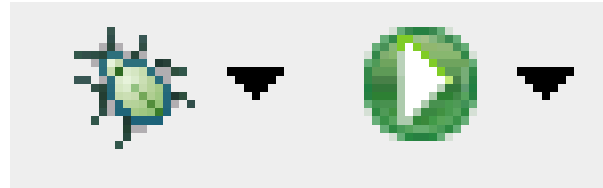
How to run your program?

Make sure the program is saved

Right click on the HelloWorld project icon and Run->Java Application



Run versus Debug



Debug

Run

Printing

- Windows | Preferences
- General | Appearance | Colors and Fonts
- Make any necessary changes

- Print doubled sided!