

Translation:

E-R diagram to MySQL
Section 3.5

Connect to the database

- On campus

```
ssh 64.59.233.245 / ssh db.cs.pacificu.edu
```

```
mysql -u punetid -p
```

```
MariaDB [(none)]> show databases;
```

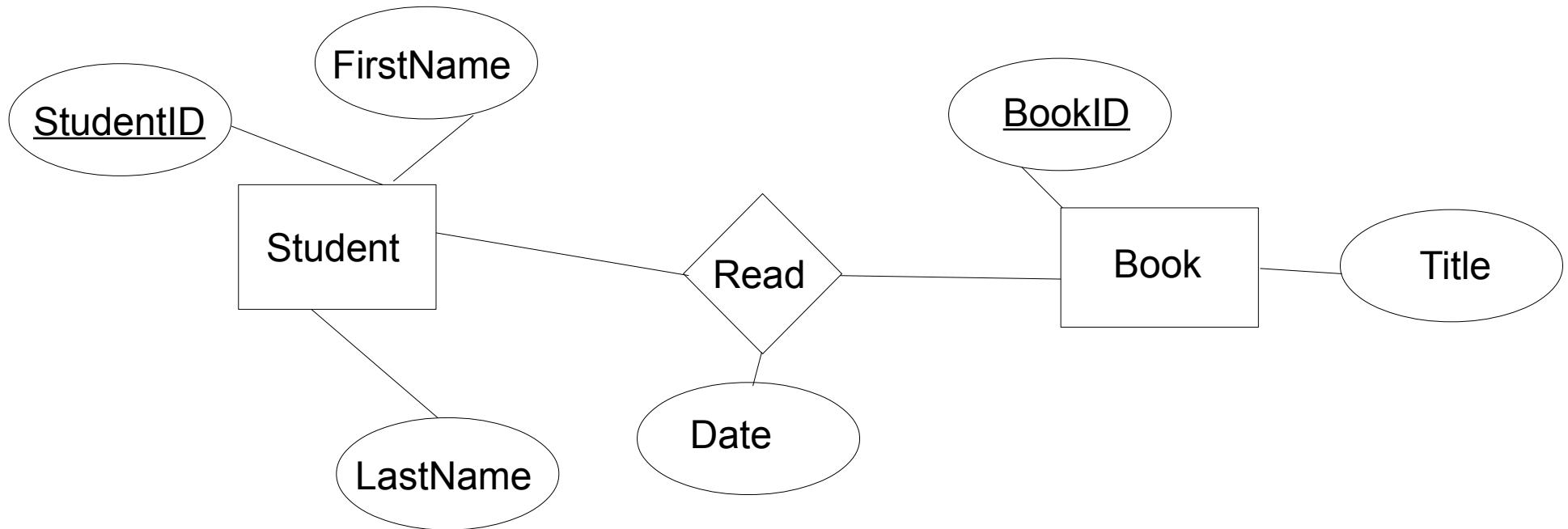
- Off campus

```
ssh zeus.cs.pacificu.edu
```

```
# follow the steps above
```

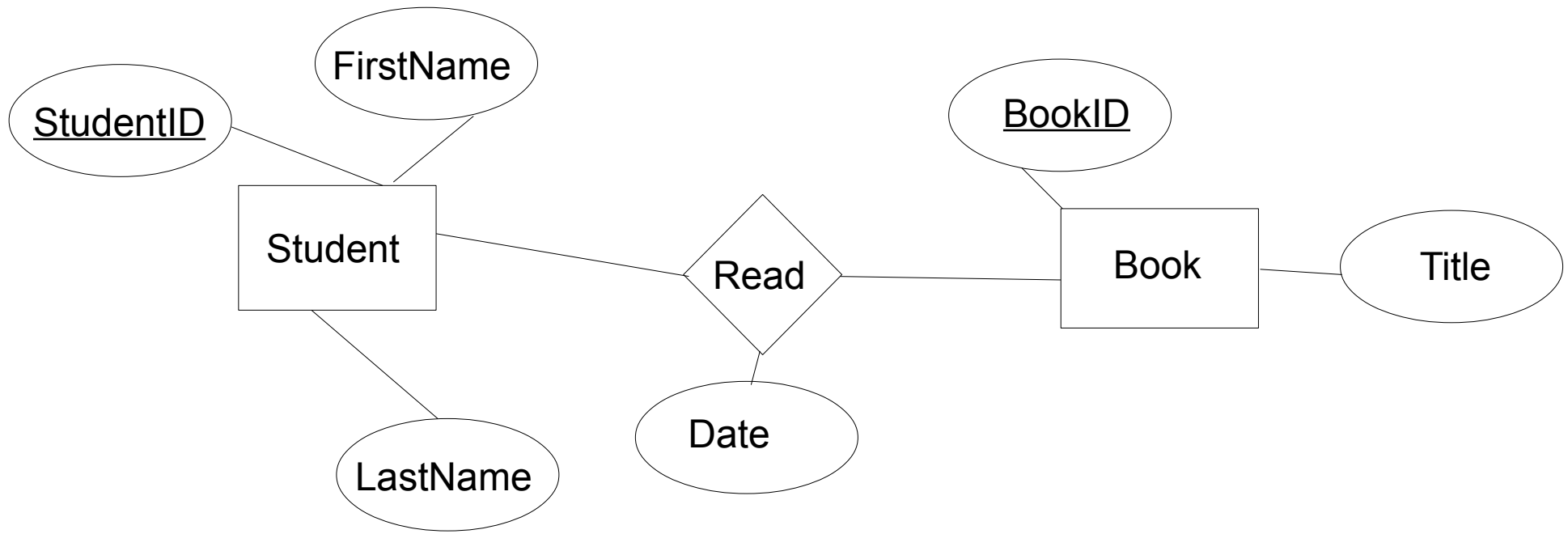
Entities

- An entity that is not involved in a relationship with constraints can be directly translated to a table.



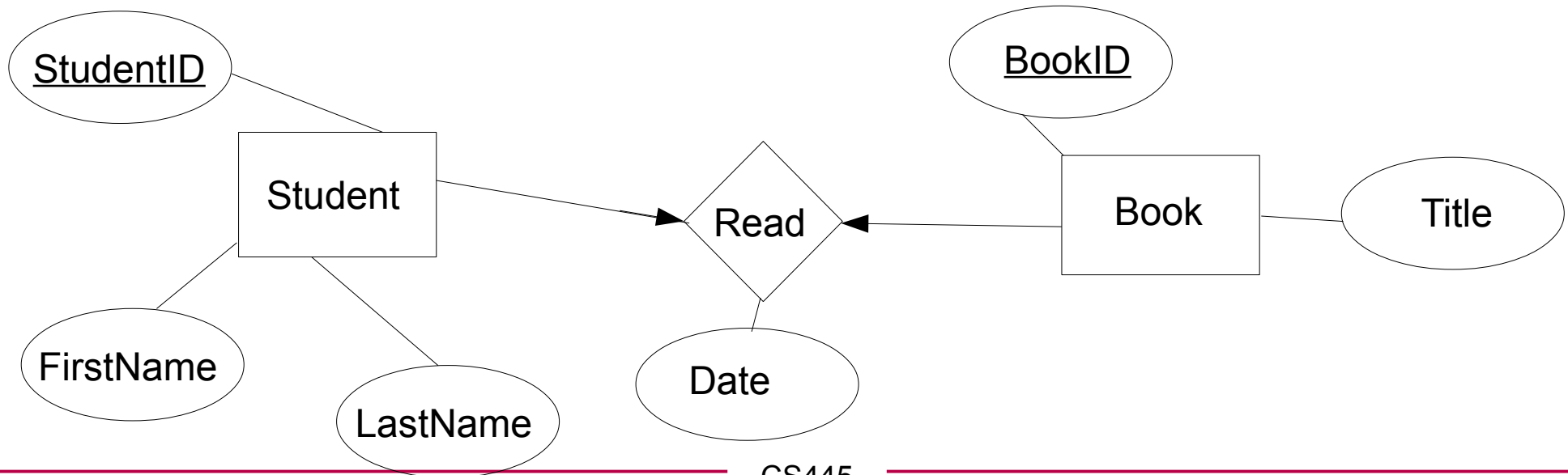
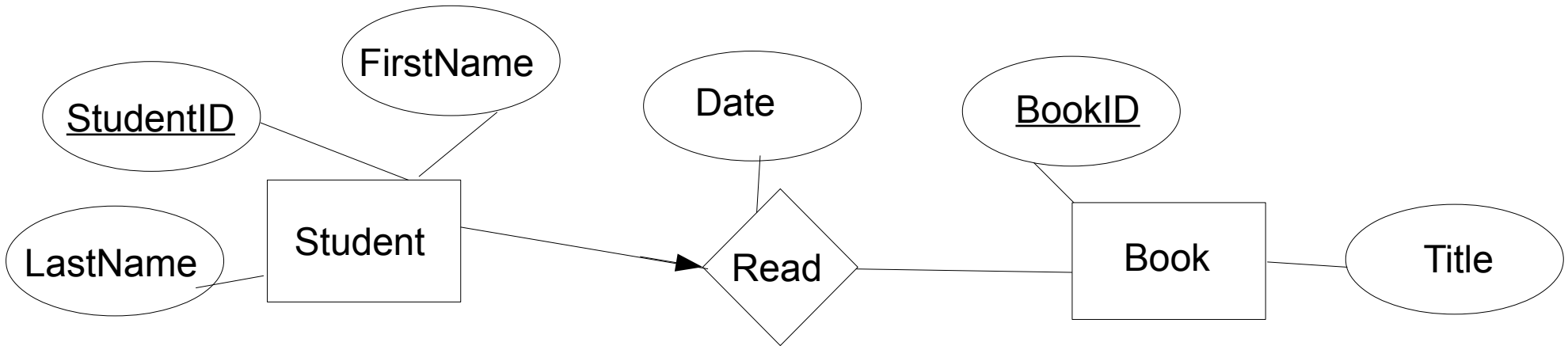
Relationships (w/o constraints)

- Relationships w/o constraints can be translated directly into a table.
- Need to add FOREIGN KEY constraints



Relationships w/ constraints

- In the diagram below, what uniquely IDs entries in Read?



Relationships w/ constraints

