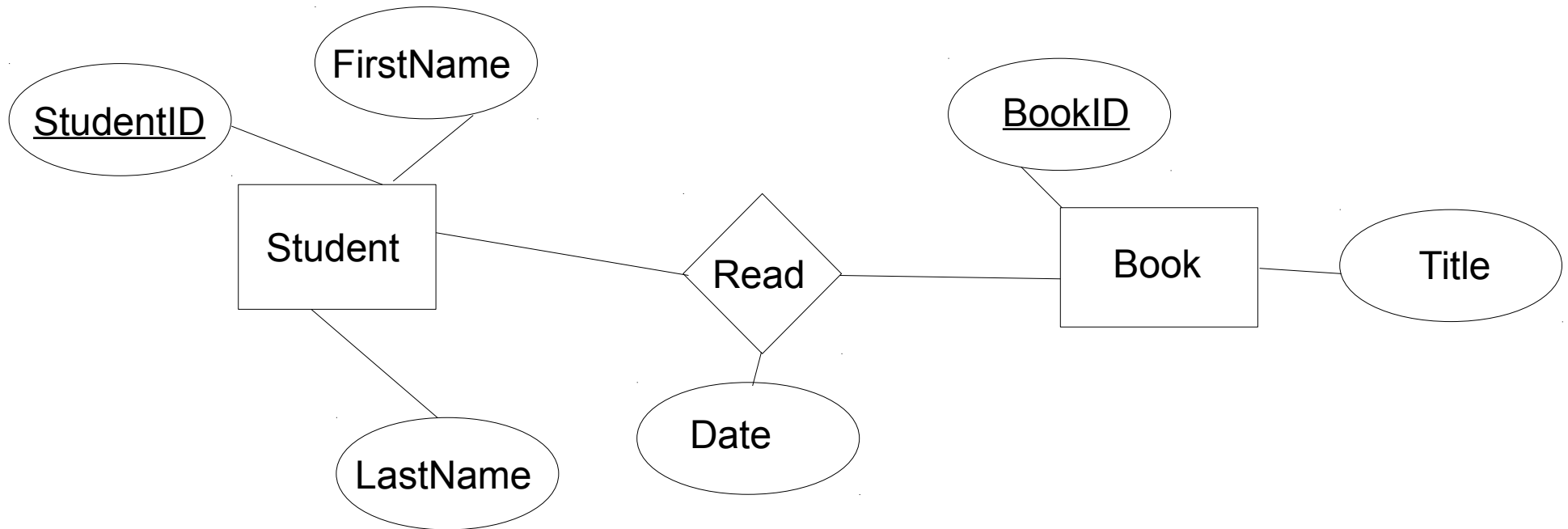


Translation:

E-R diagram to MySQL
Section 3.5

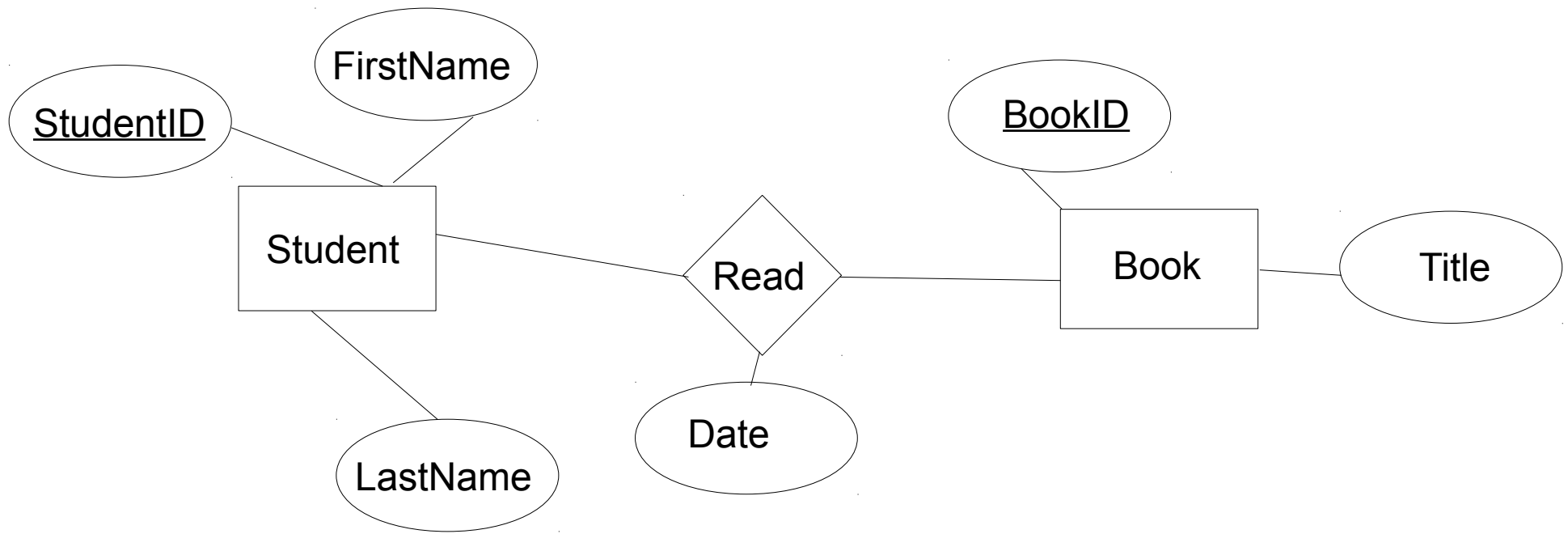
Entities

- An entity that is not involved in a relationship with constraints can be directly translated to a table.



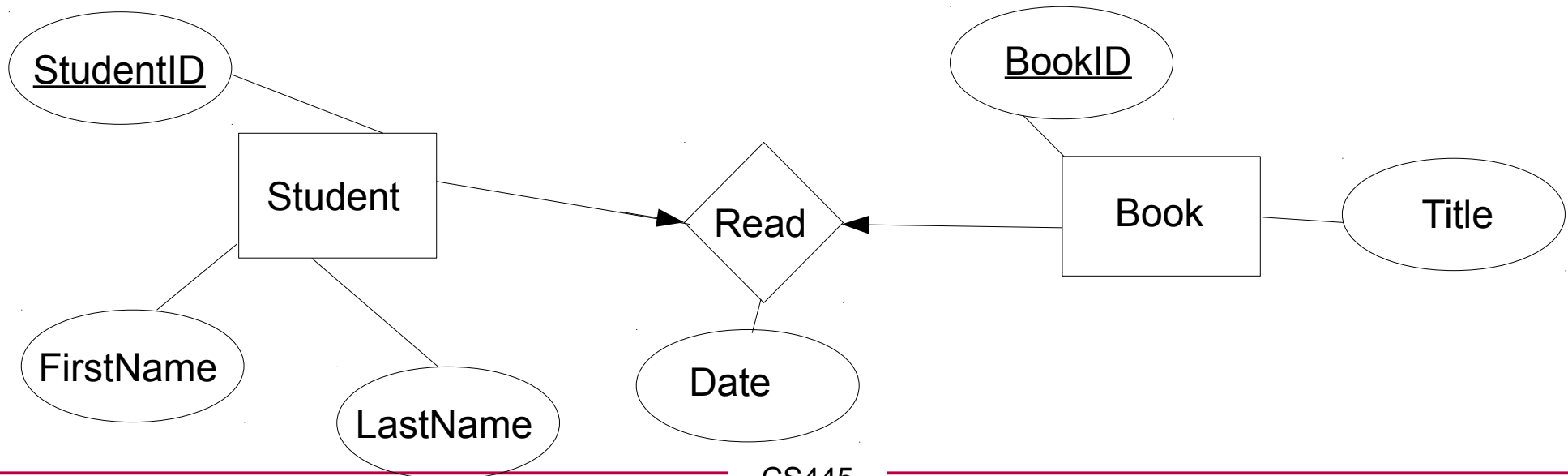
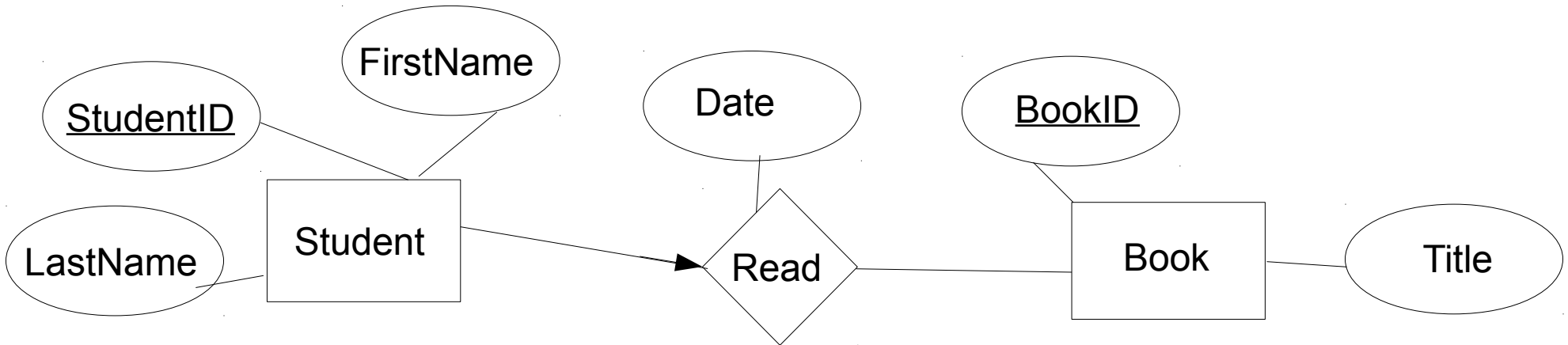
Relationships (w/o constraints)

- Relationships w/o constraints can be translated directly into a table.
- Need to add FOREIGN KEY constraints



Relationships w/ constraints

- In the diagram below, what uniquely IDs entries in Read?



Relationships w/ constraints

