



SPSS Regression

Fall 2013

Regression

EarthQuakeSmall.sav

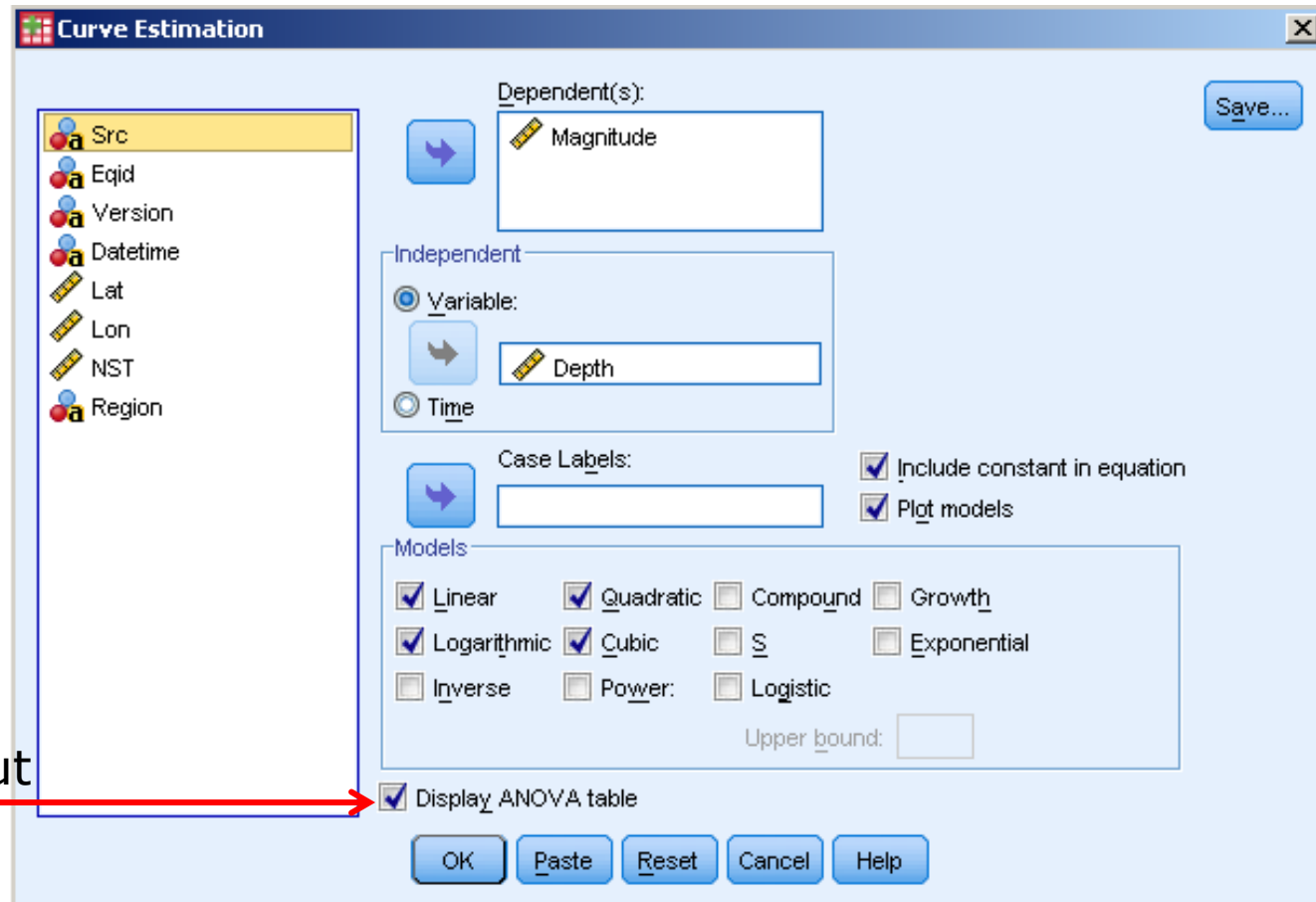
in CS 130 Public

- Analyze |
- Regress |
- Curve Estimation

The screenshot shows the PASW Statistics Data Editor interface. The title bar reads "EarthQuake7DayM25_orig.sav [DataSet 1] - PASW Statistics Data Editor". The menu bar includes File, Edit, View, Data, Transform, Analyze, Graphs, Utilities, Add-ons, Window, and Help. The Analyze menu is open, showing options like Reports, Descriptive Statistics, Compare Means, General Linear Model, Generalized Linear Models, Mixed Models, Correlate, Regression (highlighted), Loglinear, Classify, Dimension Reduction, Scale, Nonparametric Tests, Forecasting, Survival, Multiple Response, and Quality Control. The Regression submenu is also open, showing options like Linear..., Curve Estimation... (highlighted), Partial Least Squares..., Binary Logistic..., Multinomial Logistic..., Ordinal..., Probit..., Nonlinear..., Weight Estimation..., and 2-Stage Least Squares... The data grid shows columns Src, Eqid, and a variable named tetime. The current row is 15, with Src=nm, Eqid=022811e, and tetime=Monday, February 28, 2011 13:15:53 UTC.

	Src	Eqid	tetime
1	us	b0001mgd	11 03:46:29 UTC
2	us	b0001mg2	11 03:30:11 UTC
3	nc	71530295	11 02:29:21 UTC
4	nc	71530230	
5	ak	10182565	
6	us	b0001mfa	
7	us	b0001mej	
8	us	b0001m9j	
9	us	b0001m4j	
10	ak	10182353	
11	us	b0001lvz	
12	us	2011hxbb	
13	ak	10182270	
14	nm	022811f	Monday, February 28, 2011 13:15:53 UTC
15	nm	022811e	Monday, February 28, 2011 13:15:53 UTC

Regressions continued



Uncheck for clearer output

Model Summary and Parameter Estimates

Dependent Variable: Magnitude

Equation	Model Summary					Parameter Estimates		
	R Square	F	df1	df2	Sig.	Constant	b1	b2
Linear	.061	11.765	1	181	.001	3.578	.003	
Quadratic	.074	7.173	2	180	.001	3.495	.006	-7.097E-6



The independent variable is Depth.

