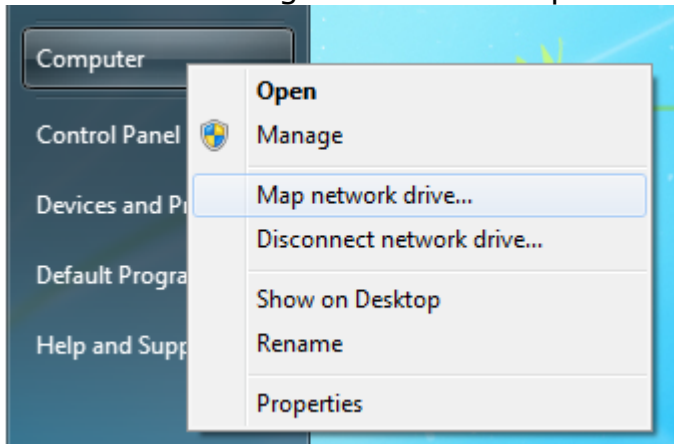


Connecting to Turing

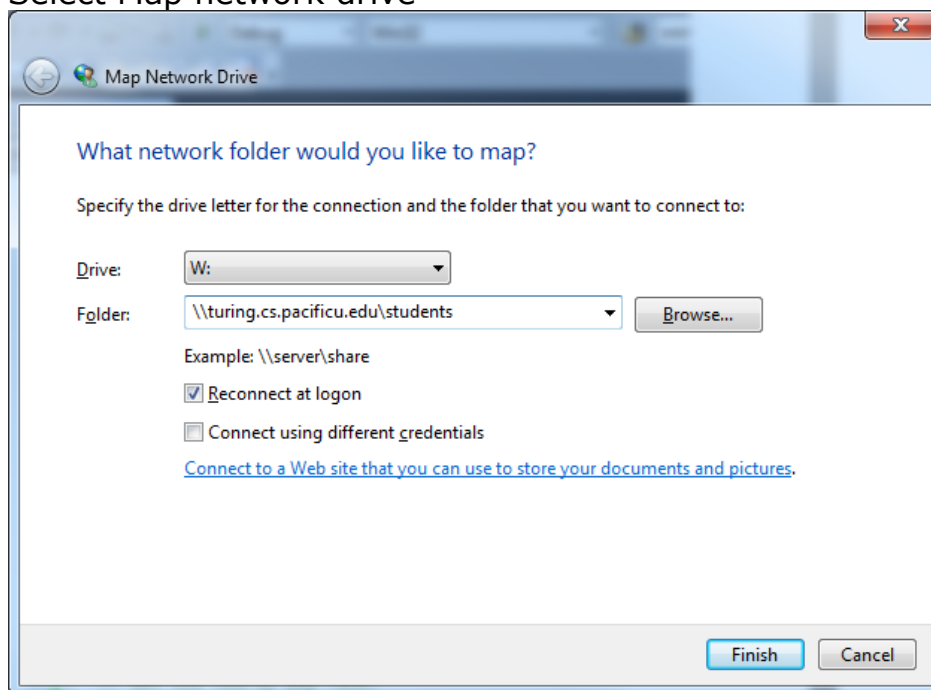
turing.cs.pacificu.edu is a Computer Science server we are going to place all of our work on from here on.

► Connect to the Computer Science server **turing.cs.pacificu.edu**

1. Go to Start and right-click on Computer



2. Select Map network drive



3. When you are prompted for a name and password, type in **eniac\yourloginname** where yourloginname is your PUNetID and the password is your Turing password.
4. If all goes well, you will see folders **CS130-01 Drop**, **CS130-01 Fall2013Accts**, and **CS130-01 Public**. Inside of **Fall2013Accts** will be your individual folder to be used for saving your projects. No other student has access to this folder, but faculty members do. Do not store any illegal material on Turing.

When you finish with the exercises, remember to log off your computer, as people will have access to your files if you forget. They can and have in the past deleted files of people who stayed logged in.

Also, after you log off, your files may be erased from the Desktop of the computer you were working on, so make sure that any file you want saved is kept in your folder on Turing or on some kind of USB stick.

► You can access Turing from any computer *on campus*. You cannot access Turing from outside of campus.

► You must know how to log on to Turing during an exam. A penalty of 10% will be assessed if you need the instructor's help.

So why is this Turing a good name for a server, let's take brief moment and digress...

Turing is named after a fairly famous British computer scientist, physicist and general genius named Alan Turing (1912 - 1954). Turing was successful as a student at King's College, Cambridge University. There he studied mathematics with increasing distinction and was elected a Fellow of the college in 1935. There he originated many of the concepts of mathematical logic. The paper "On Computable Numbers..." (Turing 1936-7) was his first and perhaps greatest triumph. It gave a definition of computation and an absolute limitation on what computation could achieve, which makes it the founding work of modern computer science. It led him to Princeton for more advanced work in logic and other branches of mathematics. He had the opportunity to remain in the United States, but chose to return to Britain in 1938, and was immediately recruited for the British communications war.

From 1939 to 1945 Turing was almost totally engaged in the mastery of the German enciphering machine, Enigma, and other cryptological investigations at now-famous Bletchley Park, the British government's wartime communications headquarters. Turing made a unique and globally significant contribution to the decryption of the Enigma and became a chief wartime scientific expert, with a particular responsibility for reading the German U-boat communications. This bit of history was captured in the movie called Engima.